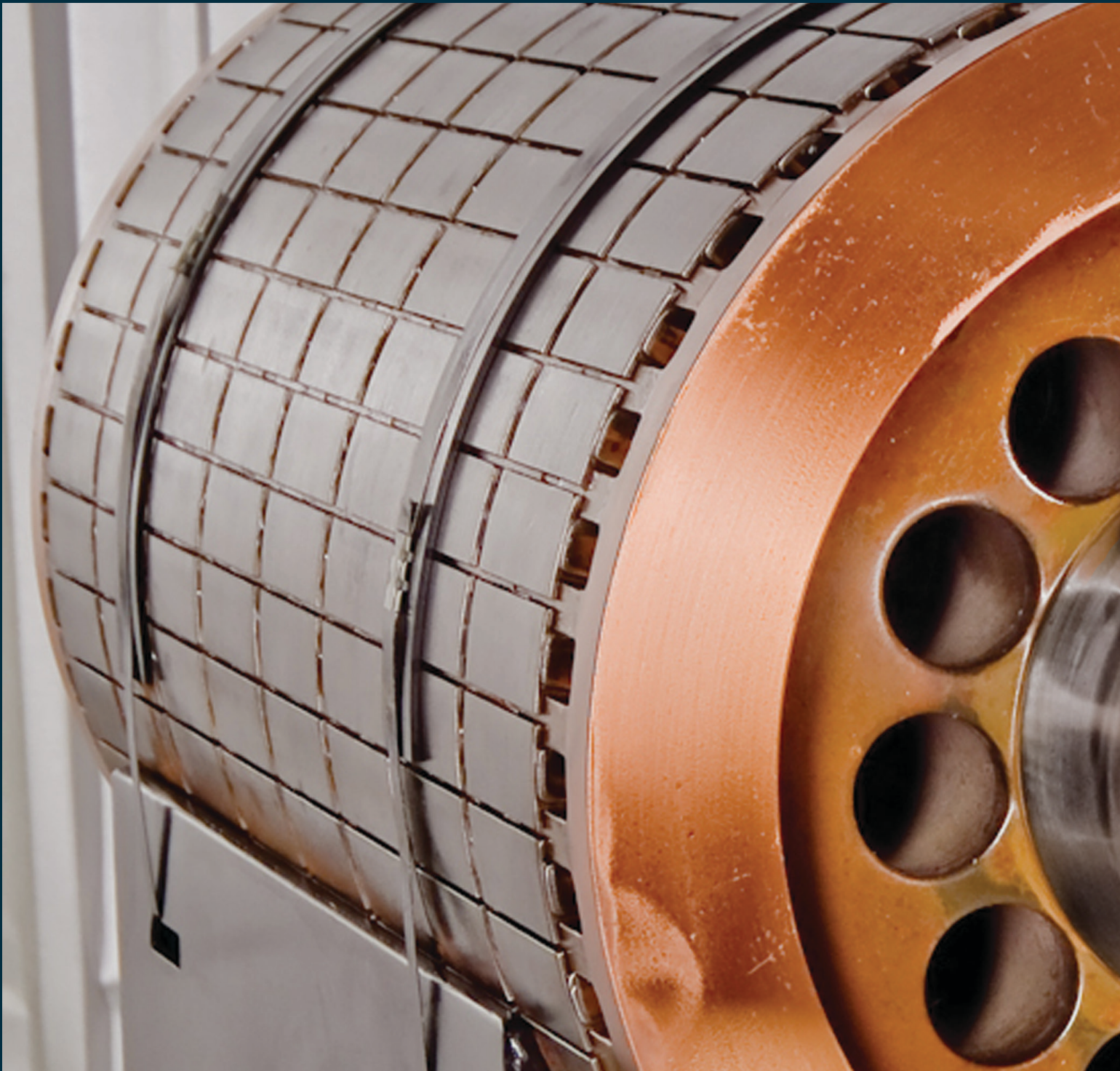
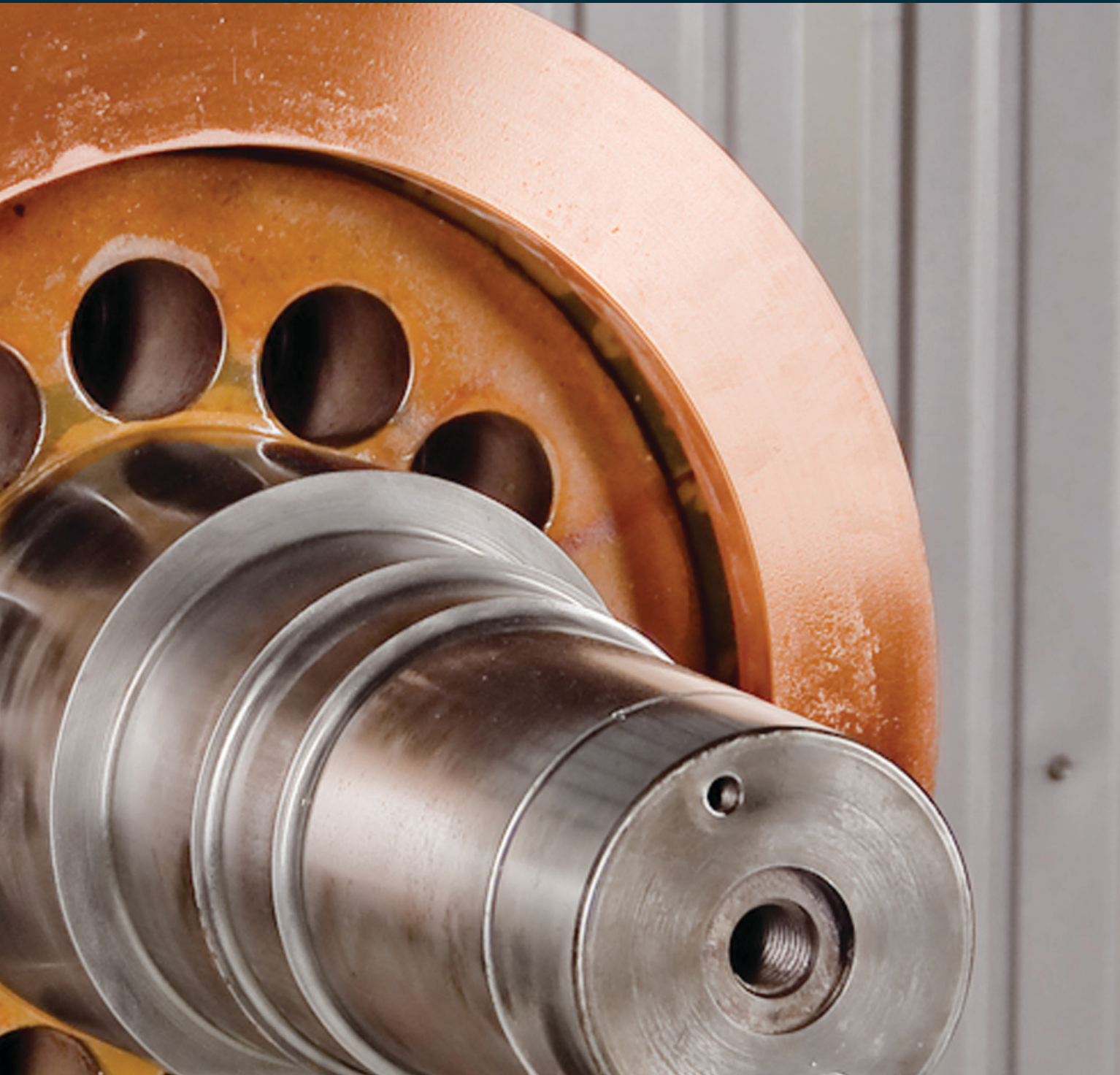


# ***MOTORS***





Industrial Service Solutions

CONTROLS

ENERGY STORAGE

MOTORS

PUMPS

VALVES

COMPRESSORS

PNEUMATICS

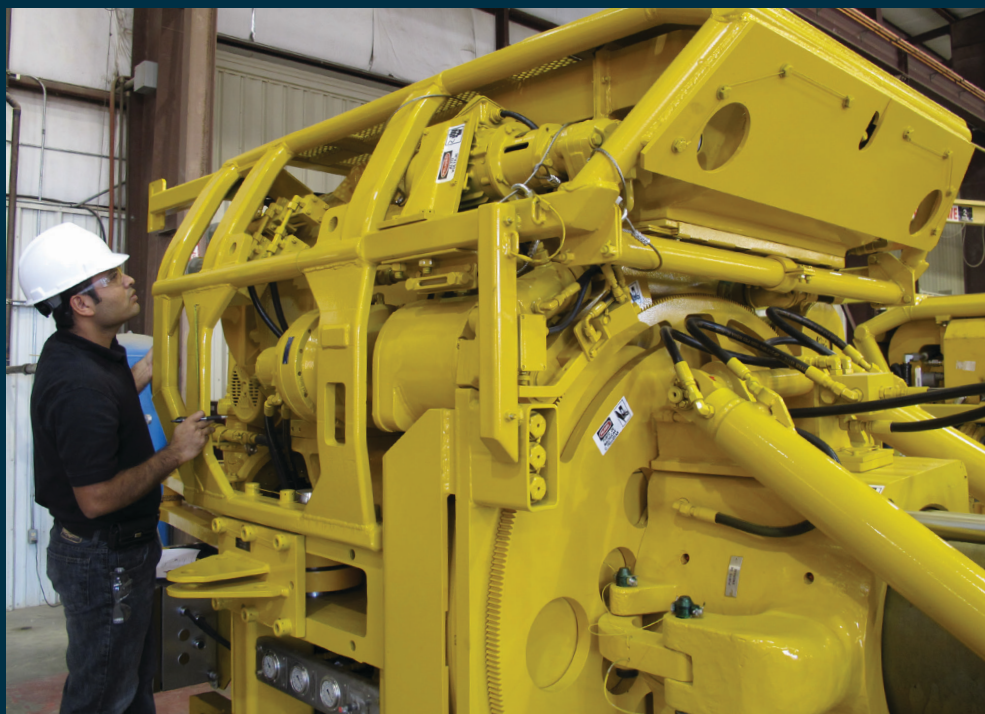
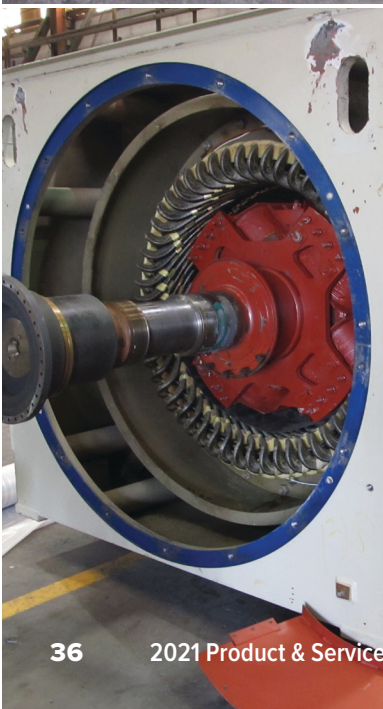
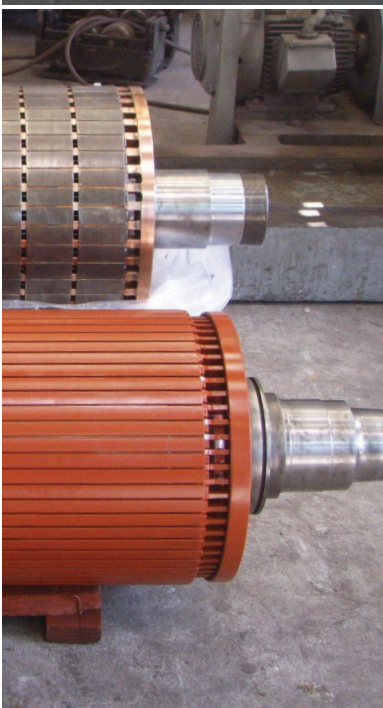
SAWMILLS

METAL RECYCLING

TRANSIT & RAILROAD

WATER & WASTEWATER

DIMENSIONS & MOUNTING



# Motor & Generator Repairs, Rebuilds, & Upgrades

Industrial Service Solutions specializes in full-service repairs, rebuilds, and upgrades for all rotating equipment types, brands, and applications, from fractional horsepower to assets weighing hundreds of tons. Our facilities are fully equipped to provide teardown, inspection, evaluation, machining, fabrication, welding, balancing, testing, and quality control services. With end-to-end process control capability, we ensure a high-quality product that meets your exact specifications, delivered on time and within budget.

- + *Single & Three Phase*
- + *AC Squirrel Cage*
- + *AC Wound Rotor*
- + *AC Brushless*
- + *AC Slip Ring*
- + *DC Series*
- + *DC Shunt*
- + *Servo Motors*
- + *Specialty Motors*
- + *Explosion-Proof*
- + *UL-Approved*
- + *Generators*
- + *Transformers*

# Motor Rewinds & In-House Coil Manufacturing

We specialize in complete electric motor rewinding and our engineers offer a variety of coil designs and re-engineering services for higher efficiency and reliability. At Industrial Service Solutions, we comply with EASA and IEEE standards for rewinds and have CNC looping, taping, and forming machines for accurate and consistent results. Our regional repair shops are climate controlled with burn off ovens, vacuum pressure impregnation systems, and we manufacture coils in-house for absolute control over quality and lead times.

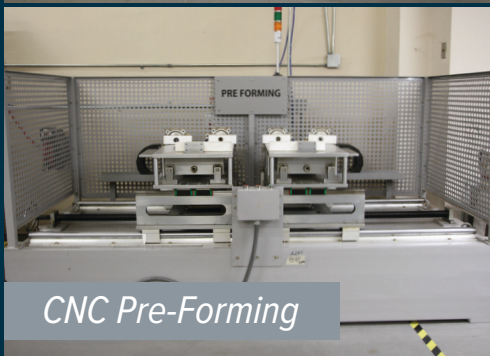
- + *Wire Wound Stators & Rotors*
- + *Squirrel Cage Rotor Bars*
- + *Brake & Clutch Coils*
- + *Variable Speed Motors*
- + *Slip Ring Motors & Rotors*
- + *Soft & Formed Coil Stators*
- + *Commutators*
- + *Field Coils*
- + *Armature Coils*
- + *Interpoles*
- + *Shunt Coils*



CNC Looping



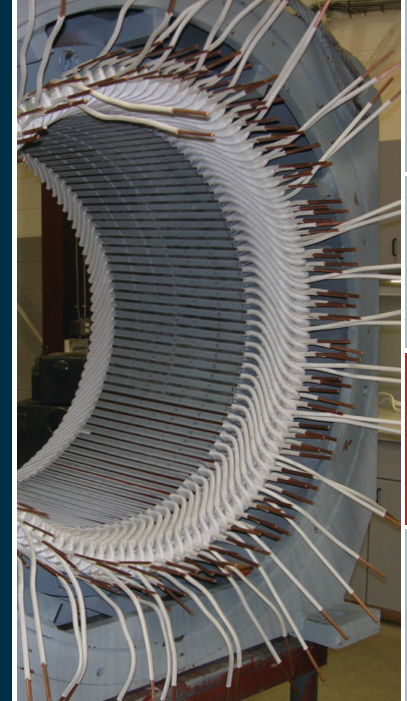
CNC Taping



CNC Pre-Forming



CNC Forming



CONTROLS

ENERGY STORAGE

MOTORS

PUMPS



VALVES

COMPRESSORS

PNEUMATICS

SAWMILLS



METAL RECYCLING

TRANSIT & RAILROAD

WATER & WASTEWATER

DIMENSIONS & MOUNTING

CONTROLS
ENERGY STORAGE
MOTORS
PUMPS
VALVES
COMPRESSORS
PNEUMATICS
SAWMILLS
METAL RECYCLING
TRANSIT & RAILROAD
WATER & WASTEWATER
DIMENSIONS & MOUNTING



# Comprehensive Testing

Industrial Service Solutions has one of the largest ISO 9001-2015 testing facilities in North America. We provide full load testing up to 6,000 HP and no load testing up to 25,000 HP at 15kV for both horizontal and vertical mounted motors. Our in-house engineers utilize state-of-the-art equipment, to comply with EASA and IEEE standards, and can meet any customer specification. Motor, generator, drive, and transformer testing capabilities include, but are not limited to:

- + AC Line Test up to 4,160 V
- + DC Line Test up to 600 V
- + No Load Test up to 25,000 HP
- + Full Load Test up to 6,000 HP
- + Computerized Core Loss Test
- + Insulation Resistance Test
- + Polarization Index Test
- + Hi-Pot Test up to 15 kV
- + Surge Comparison Test
- + AC & DC Voltage Drop Test
- + PdMA MCE Test
- + Armature Bar-to-Bar Test
- + Field Coil Polarity Test
- + High Current Rotor Test
- + Winding Resistance Test (Wheatstone Bridge)

## COMPUTER RECORDINGS

- + Voltages
- + HP / kW
- + Speed
- + Temperature Rise
- + Currents
- + Efficiency
- + Vibration
- + Therna Imaging

# Custom Manufacturing

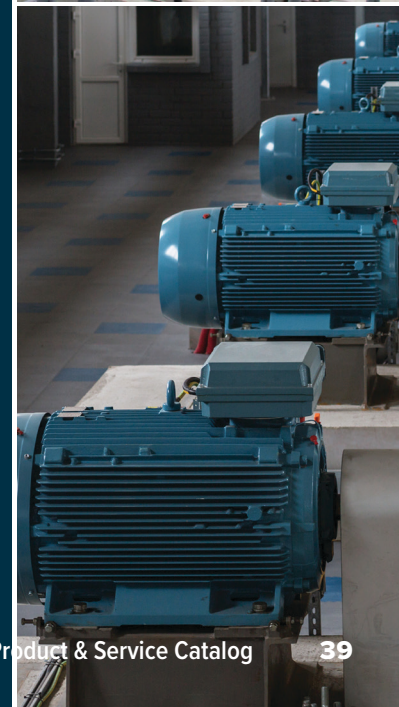
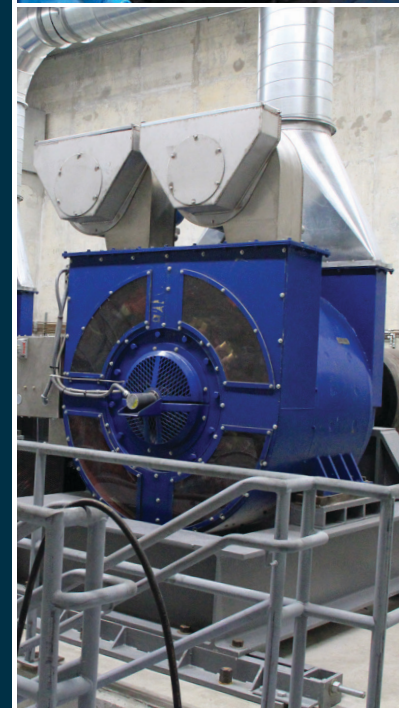
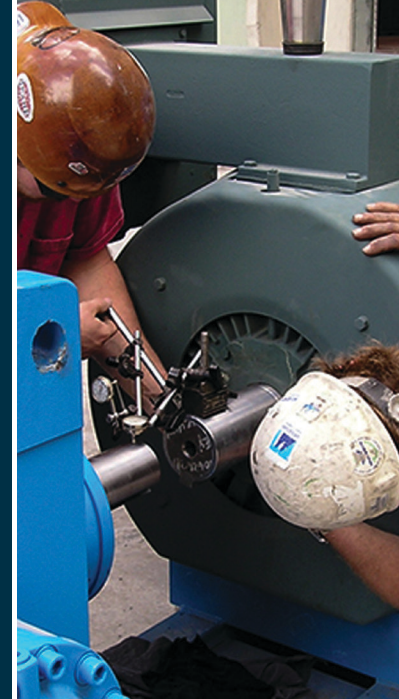
We design, engineer, manufacturer, and service high-performance power systems for high-demand industrial applications. Our patented designs and proprietary processes deliver cost-effective solutions that last up to five years longer than our competition. We specialize in never-been-done projects – if it doesn't exist, we can develop it. From unique electrical and mechanical specifications to weight and footprint requirements, our highly skilled engineers provide innovative solutions to meet your exact needs.



# Nationwide Field Services

Industrial Service Solutions' nationwide network of field experts and fully equipped service vehicles, including 53-foot mobile tooling trailers, are available around-the-clock for your unplanned maintenance and emergency repairs. Our tenured, highly skilled technicians have the know-how and independent capabilities to troubleshoot, diagnose, and yield solutions for all rotating equipment types, brands, and applications. At Industrial Service Solutions, our personnel are supported by a flex workforce of vetted talent for unmatched response and turnaround times.

- + Turnarounds, Shutdowns, & Outages
- + Preventative Maintenance
- + Start-up & Troubleshooting
- + Equipment Repairs & Overhauls
- + Electrical & Mechanical Repair
- + Specialty Rigging & Installation
- + Machining & Part Fabrication
- + Preventative Maintenance
- + Cryogenic Cleaning & Degreasing
- + Turnkey Project Services
- + Onsite Maintenance
- + Non-Destructive Testing
- + Laser & Optical Alignment
- + Performance Testing
- + Vibration Analysis
- + Dynamic Balancing
- + Infrared Thermal Imaging
- + Onsite Bearing Replacement



CONTROLS

ENERGY STORAGE

MOTORS

PUMPS

VALVES

COMPRESSORS

PNEUMATICS

SAWMILLS

METAL RECYCLING

TRANSIT & RAILROAD

WATER & WASTEWATER

DIMENSIONS & MOUNTING

## Brands We Represent

Industrial Service Solutions is a manufacturer and distributor of AC and DC motors, from fractionals to 5,000 HP and above. We provide distribution for the major OEMs below.



\* Some brands may not be available in all geographic areas.



# Dominator AC Motors

Horizontal & Vertical Mount



## APPLICATIONS

- + Cement & Aggregates
- + Chemical & Petrochemical
- + Marine & Dredging
- + Mining & Metals
- + Municipal
- + Oil & Gas
- + Pulp & Paper
- + Power Generation
- + Recycling
- + Tire & Rubber

HP	TORQUE	RPM	VOLTS	FREQ	AMPS
400	2,632 ft lbs	798	575*	45 Hz	367
800	5,305 ft lbs	792	550*	40 Hz	762
1,150	7,626 ft lbs	792	565*	40 Hz	1,115
1,350	8,963 ft lbs	791	550*	40 Hz	1,345
1,500	9,985 ft lbs	789	550*	40 Hz	1,494
1,600	10,650 ft lbs	789	550*	40 Hz	1,585
1,750	11,634 ft lbs	790	575*	40 Hz	1,658
2,000	13,262 ft lbs	792	575*	45 Hz	1,895
2,400	14,005 ft lbs	900	575*	45 Hz	2,286

Medium voltage, various RPMs, & larger HP designs available. \*Can be wound 480V, 600V, 690V, 2300V, & 4160V

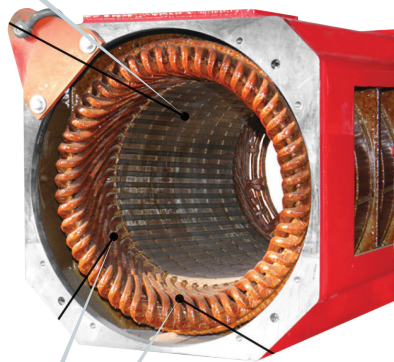


Motors can be vertically mounted

Center mounted stainless steel junction box allows cable entry from left or right side, with copper bus bar, terminal strip for low voltage connection, lockout switch, and pressure switch. Junction box rated IP56.

Unique superior cooling system utilizes the Eliminator Blower made from Stainless Steel

Form wound stator with vented laminations for superior cooling



Anti-condensation space heater  
VPI system utilizing Class H insulation

Insulated bearing housing (no special bearing required)

Windings are MICA Kapton wrapped

Single or double shaft extension available

Certifications Available:







# Dominator Marine Motors

*Horizontal & Vertical Mount*

## APPLICATIONS

- + Dredging
- + Marine

HP	TORQUE	RPM	VOLTS	FREQ	AMPS
400	1,166 ft lbs	1,800	690	60 Hz	309
600	1,750 ft lbs	1,800	690	60 Hz	464
800	2,333 ft lbs	1,800	690	60 Hz	620
1,150	3,354 ft lbs	1,800	690	60 Hz	892
1,500	4,375 ft lbs	1,800	690	60 Hz	1,163
2,000	5,833 ft lbs	1,800	690	60 Hz	1,550
2,500	7,291 ft lbs	1,800	690	60 Hz	1,938
3,000	8,750 ft lbs	1,800	690	60 Hz	2,325
4,000	11,666 ft lbs	1,800	690	60 Hz	3,099
5,000	14,583 ft lbs	1,800	690	60 Hz	3,875

Medium voltage, various RPMs, and larger HP designs available.

## FEATURES

- + Center mounted stainless steel junction box allows cable entry from left or right hand side, with copper bus bar, terminal strip for low voltage connection, lockout switch and pressure switch. Resistance temperature detectors connection point. Junction box is rated IP56.
- + Unique closed-loop cooling system
- + Form wound stator with vented laminations for superior cooling
- + Anti-condensation space heater
- + VPI system utilizing Class H insulation
- + Windings are MICA Kapton wrapped
- + Insulated bearing housing (no special bearing required)
- + Single or double shaft extension available

Certifications Available:





# Dominator Mining Motors

*Horizontal & Vertical Mount*

## APPLICATIONS

- + Boring
- + Conveyors
- + Crane & Hoist
- + Drag Lines
- + Rock Crushers
- + Rock Saws
- + Calcining Kilns
- + Drying Kilns

HP	TORQUE	RPM	VOLTS	FREQ	AMPS
400	2,632 ft lbs	798	575	45 Hz	367
800	5,305 ft lbs	792	550	40 Hz	762
1,150	7,626 ft lbs	792	565	40 Hz	1,115
1,350	8,963 ft lbs	791	550	40 Hz	1,345
1,500	9,985 ft lbs	789	550	40 Hz	1,494
1,600	10,650 ft lbs	789	550	40 Hz	1,585
1,750	11,634 ft lbs	790	575	40 Hz	1,658
2,000	13,262 ft lbs	792	575	45 Hz	1,895
2,400	14,005 ft lbs	900	575	45 Hz	2,286

Medium voltage, various RPMs, and larger HP designs available. Please consult factory for details.

## FEATURES

- + Center mounted stainless steel junction box allows cable entry from left or right hand side, with copper bus bar, terminal strip for low voltage connection, lockout switch and pressure switch. Resistance temperature detectors connection point. Junction box is rated IP56.
- + Form wound stator with vented laminations for superior cooling
- + Insulated bearing housing (no special bearing required)
- + Unique closed-loop cooling system
- + Anti-condensation space heater
- + VPI system utilizing Class H insulation
- + Windings are MICA Kapton wrapped
- + Single or double shaft extension available



Certifications Available:





# Enforcer AC Motors

*Horizontal & Vertical Mount*

## APPLICATIONS

- + Cement & Aggregates
- + Chemical & Petrochemical
- + Marine & Dredging
- + Mining & Metals
- + Municipal
- + Oil & Gas
- + Pulp & Paper
- + Power Generation
- + Recycling
- + Tire & Rubber

HP	TORQUE	RPM	VOLTS	FREQ	AMPS
2,500	16,406 ft lbs	800	690*	40 Hz	1,940
2,850	18,703 ft lbs	800	690*	40 Hz	2,208
3,000	19,687 ft lbs	800	690*	40 Hz	2,325
5,000	32,812 ft lbs	800	690*	40 Hz	3,785
6,000	39,375 ft lbs	800	690*	40 Hz	4,650
10,000	65,625 ft lbs	800	690*	40 Hz	7,750

Medium voltage, various RPMs, and larger HP designs available.  
\*Can be wound to 480V, 600V, 690V, 2300V, and 4160V

## FEATURES

- + Class H insulation
- + 50°C Ambient Temperature
- + Wye connection
- + VPI form wound coils
- + Ingress Protection IP44 (Open)
- + EExe Heaters installed
- + (6) 100 Platinum RTDs installed on windings (2 per phase)
- + Double tapered shaft
- + Slotted foot
- + Seals & bearing caps
- + Certified outline drawing
- + Certificate of compliance

Certifications Available:





# Revolution AC Motors

*Horizontal & Vertical Mount / Top Drive*

## APPLICATIONS

- + Cement & Aggregates
- + Chemical & Petrochemical
- + Marine & Dredging
- + Mining & Metals
- + Municipal
- + Oil & Gas
- + Pulp & Paper
- + Power Generation
- + Recycling
- + Tire & Rubber

HP	TORQUE	RPM	VOLTS	FREQ	AMPS
350	1,531 ft lbs	1,200	575	40 Hz	325
400	1,750 ft lbs	1,200	575	40 Hz	372
500	2,187 ft lbs	1,200	575	40 Hz	465
550	2,406 ft lbs	1,200	575	40 Hz	512
600	2,625 ft lbs	1,200	575	40 Hz	558

Medium voltage, various RPMs, and larger HP designs available.

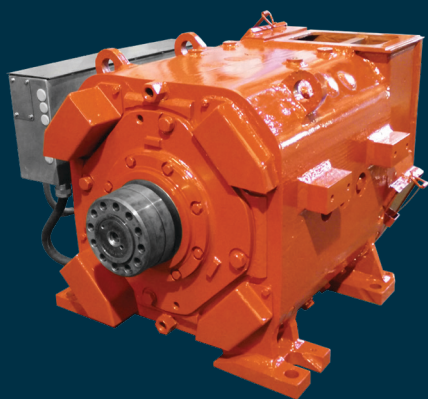
## FEATURES

- + Form wound 5kV stator windings control voltage spikes from long lead cables
- + Copper bar rotor construction (no die cast aluminum rotors used)
- + Heavy duty bearings for mechanical strength
- + Heat sink formed in stator for better heat dissipation
- + Optional cable leads or terminal block configuration with copper bus bar construction
- + Heavy duty end rings for high current carrying capacity
- + Heavy duty snap rings to keep the rotor from dropping on brake pads
- + Steel housing, retaining spring, and keeper
- + Upgraded heavy load bearing arrangement
- + 5kV lead cable
- + VPI Class H insulation
- + Double tapered shaft
- + DPFV enclosure
- + Safety wired
- + With covers
- + With brake hub



Certifications Available:





# Custom DC Motors

*New & Remanufactured*

## APPLICATIONS

- + Cement & Aggregates
- + Chemical & Petrochemical
- + Marine & Dredging
- + Mining & Metals
- + Municipal
- + Oil & Gas
- + Pulp & Paper
- + Power Generation
- + Recycling
- + Tire & Rubber

## FEATURES

- + Custom built up to 5,000 HP
- + Eliminator cooling blower removes contaminants
- + Loss of blower protection device
- + Oversized junction box with copper bushbars
- + Full load tested
- + SCR Duty
- + Precision balance for low vibration
- + Removable commutator cover
- + Emergency replacement parts readily available
- + Two year warranty and 24/7 field service

## OPTIONS

- + Safety lockout device
- + Vertical configuration
- + Explosion proof air pressure switch
- + TEWAC cooling for low noise operation
- + Copper split bearings
- + Double shaft
- + RTDs
- + Tachometer generator
- + Filtration package (5 micron or less)
- + Spare parts kit: 2 commutator coils, 2 shunt fields, 2 brush studs, 2 sets of brushes



*Certifications Available:*





# Eliminator Cooling Blowers

*Vertical & Horizontal Mount*

## APPLICATIONS

- + Dirty & Enclosed Environments
- + Chemical & Petrochemical
- + Marine & Dredging
- + Mining & Metals
- + Plastic & Extruding
- + Pulp & Paper

The patented, high-capacity Eliminator Cooling Blower is the most efficient blower on the market due to its unique blade design that centrifugally removes contamination from the air without the use of filters.

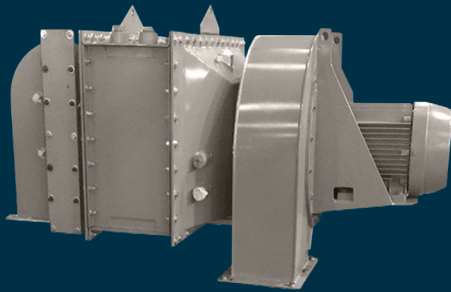
HP	RPM	FREQ	CFM	PRESSURE
10	1,800	60 Hz	2,600	5
10	3,000	50 Hz	2,500	7
10	3,600	60 Hz	2,200	5
15	1,800	60 Hz	2,800	5
15	3,000	50 Hz	-	-
15	3,600	60 Hz	2,800	5
20	3,600	60 Hz	3,500	5

## FEATURES

- + Eliminates premature failure on AC and DC motors caused by contamination
- + Leads industry in noise level with vertical or horizontal mounting options
- + Mounts on standard drilling motors including GE752, GEB20, GEB28, GEB29, and Dominator frames
- + Available in stainless and carbon steel

Certifications Available:





# Closed-Loop Cooling Systems

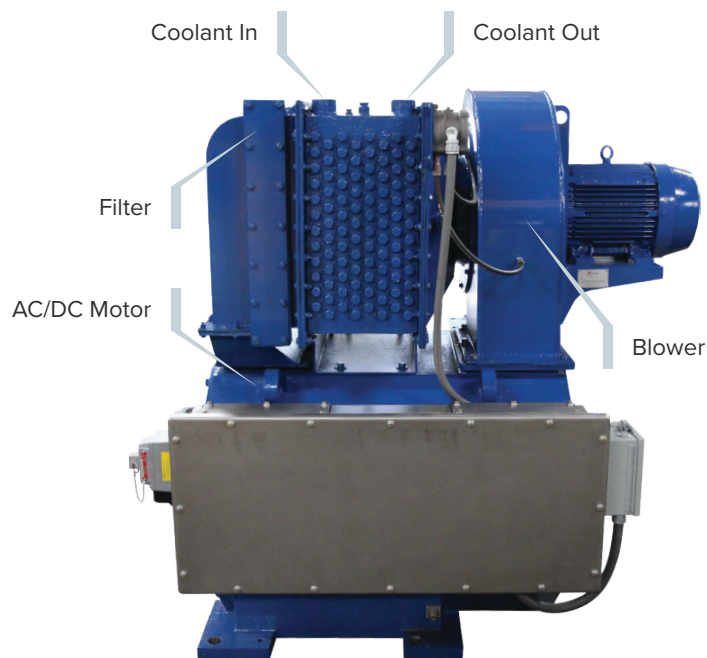
For AC & DC Motors

## APPLICATIONS

- + Dirty Environments
- + High Temperatures
- + Marine & Dredging
- + Plastic & Extruding
- + Pulp & Paper
- + Offshore Drilling
- + Tire & Rubber

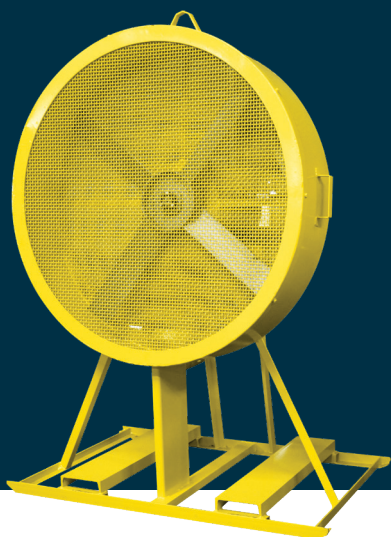
Our closed-loop cooling system is designed to provide sufficient cooling to most AC and DC motors. This greatly eliminates downtime and expensive alternatives.

MODELS	5 HP	7.5 HP	10 HP	20 HP	25 HP
--------	------	--------	-------	-------	-------



Certifications Available:





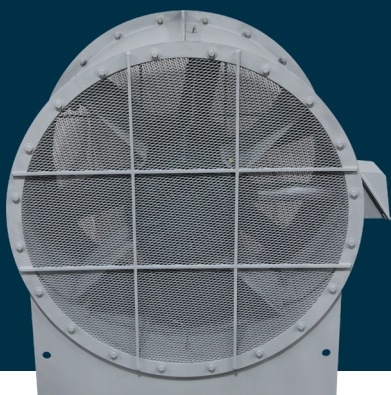
# Bug Blowers

*Floor, Skid, & Bulkhead Mount*

Certifications Available:



SIZE	CFM	HP	RPM	VOLTS	FREQ	WT
24"	6,000	2	1,800	460	60Hz	400 lbs
48"	25,000	3	900	460	60Hz	650 lbs
	25,000	5	-	460	60Hz	530 lbs
	38,000	5	1,200	460	60Hz	680 lbs
50"	40,000	7.5	1,200	460	60Hz	766 lbs



# Axial Fans

*Floor, Skid, & Bulkhead Mount*

SIZE	CFM	FPM	BHP	RPM	MAX RPM
55"	85,000	5,130	53	1,172	1,500

## FEATURES

- + Three phase motor
- + Motor in TEFC enclosure
- + Starter in explosion proof enclosure
- + Cast aluminum impeller
- + Carbon steel blowerp
- + 360° horizontal rotation
- + Floor, skid, bulkhead mounted
- + Lifting eye on fan housing
- + Painted safety yellow
- + Power cable not included

Certifications Available:







# Single-Phase Motors

## TEFC Rolled Steel

Foot Mount / General Purpose Motors

### APPLICATIONS

- + General Purpose in Damp & Dusty/Dirty Environments
- + Compressors
- + Fans
- + Material Handling
- + Pumps

### FEATURES

- + High Efficient
- + Design B
- + Class F Insulation
- + 40°C Ambient Temperature
- + Double Shielded Bearings
- + Rolled Steel Frame & Aluminum End Shield

HP	RPM	VOLTS	FRAME	MODEL	SF	FL AMPS	FL EFF	WT
1/4	3600	115 / 230	48	RS142T01	1	3.4 / 1.7	61%	17 lbs
	1800	115 / 230	48	RS144T01	1	4.2 / 2.1	65%	19 lbs
1/3	3600	115 / 230	48	RS132T01	1.15	4.2 / 2.1	65%	21 lbs
		115 / 230	56	RS132T02	1.35	5.2 / 2.6	58%	23 lbs
	1800	115 / 230	48	RS134T01	1.15	5.2 / 2.6	68%	23 lbs
		115 / 230	56	RS134T02	1	4.8 / 2.4	65%	22 lbs
1/2	3600	115 / 230	48	RS122T01	1.15	5.8 / 2.9	69%	23 lbs
		115 / 230	56	RS122T02	1.15	6.6 / 3.3	65%	26 lbs
	1800	115 / 230	48	RS124T01	1.15	7.2 / 3.6	71%	26 lbs
		115 / 230	56	RS124T02	1.25	6.4 / 3.2	69%	23 lbs
3/4	3600	115 / 230	56	RS342T01	1.15	8.6 / 4.3	70%	30 lbs
	1800	115 / 230	56	RS344T01	1	8.8 / 4.4	73%	25 lbs
1	3600	115 / 230	56	RS12T01	1.15	10.8 / 5.4	73%	36 lbs
	1800	115 / 230	56	RS14T01	1.15	11.2 / 5.6	75%	40 lbs
1.5	3600	115 / 230	143T	RS322T01	1.15	13.8 / 6.9	74%	45 lbs
	1800	115 / 230	145T	RS324T01	1	13.4 / 6.7	76%	48 lbs
2	3600	115 / 230	56	RS22T01	1.15	18.0 / 9.0	76%	40 lbs
		230	182T	RS22T02	1.15	9	76%	51 lbs
	1800	115 / 230	56	RS24T01	1.15	17.8 / 8.9	77%	75 lbs
		230	182T	RS24T02	1.15	8.9	77%	77 lbs
3	3600	230	182T	RS32T01	1	13.1	78%	81 lbs
	1800	230	182T	RS34T01	1	13	79%	75 lbs
5	3600	230	184T	RS52T01	1	21.3	80%	97 lbs
	1800	230	184T	RS54T01	1	20.8	82%	90 lbs
7.5	3600	230	213T	RS72T01	1	30.9	83%	86 lbs
	1800	230	213T	RS74T01	1	30.5	84%	126 lbs
10	3600	230	215T	RS102T01	1	40.2	85%	130 lbs
	1800	230	215T	RS104T01	1	39.7	86%	135 lbs

Dimensions & Mounting

Page 166



# Single-Phase Motors

## TEFC Rolled Steel

*C-Face / General Purpose Motors*

### APPLICATIONS

- + General Purpose in Damp & Dusty/Dirty Environments
- + Compressors
- + Fans
- + Material Handling
- + Pumps

### FEATURES

- + High Efficient
- + Design B
- + Class F Insulation
- + 40°C Ambient Temperature
- + Double Shielded Bearings
- + Rolled Steel Frame & Aluminum End Shield

HP	RPM	VOLTS	FRAME	MODEL		SF	FL AMPS	FL EFF	WT
				FOOTED	FOOTLESS				
1/4	3600	115 / 230	48C	RS142T11	RS142T21	1	3.4 / 1.7	61%	17 lbs
	1800	115 / 230	48C	RS144T11	RS144T21	1	4.2 / 2.1	65%	19 lbs
1/3	3600	115 / 230	48C	RS132T11	RS132T21	1.15	4.2 / 2.1	65%	21 lbs
		115 / 230	56C	RS132T12	RS132T22	1.35	5.2 / 2.6	58%	23 lbs
	1800	115 / 230	48C	RS134T11	RS134T21	1.15	5.2 / 2.6	68%	23 lbs
		115 / 230	56C	RS134T12	RS134T22	1	4.8 / 2.4	65%	22 lbs
1/2	3600	115 / 230	48C	RS122T11	RS122T21	1.15	5.8 / 2.9	69%	23 lbs
		115 / 230	56C	RS122T12	RS122T22	1.15	6.6 / 3.3	65%	26 lbs
	1800	115 / 230	48C	RS124T11	RS124T21	1.15	7.2 / 3.6	71%	26 lbs
		115 / 230	56C	RS124T12	RS124T22	1.25	6.4 / 3.2	69%	23 lbs
3/4	3600	115 / 230	56C	RS342T11	RS342T21	1.15	8.6 / 4.3	70%	30 lbs
	1800	115 / 230	56C	RS344T11	RS344T21	1	8.8 / 4.4	73%	25 lbs
1	3600	115 / 230	56C	RS12T11	RS12T21	1.15	10.8 / 5.4	73%	36 lbs
	1800	115 / 230	56C	RS14T11	RS14T21	1.15	11.2 / 5.6	75%	40 lbs
1.5	3600	115 / 230	143TC	RS322T11	RS322T21	1.15	13.8 / 6.9	74%	45 lbs
	1800	115 / 230	145TC	RS324T11	RS324T21	1	13.4 / 6.7	76%	48 lbs
2	3600	115 / 230	56C	RS22T11	RS22T21	1.15	18.0 / 9.0	76%	40 lbs
		230	145TC	RS22T12	RS22T22	1.15	9	76%	51 lbs
	1800	115 / 230	145TC	RS24T11	RS24T21	1.15	17.8 / 8.9	77%	75 lbs
3	3600	230	182TC	RS32T11	RS32T21	1	13.1	78%	81 lbs
	1800	230	182TC	RS34T11	RS34T21	1	13	79%	75 lbs
5	3600	230	184TC	RS52T11	RS52T21	1	21.3	80%	97 lbs
	1800	230	184TC	RS54T11	RS54T21	1	20.8	82%	90 lbs



# Single-Phase Motors

## ODP Rolled Steel

Foot Mount / General Purpose Motors

### APPLICATIONS

- + General Purpose where Contaminants are Minimal
- + Compressors
- + Fans
- + Material Handling
- + Pumps

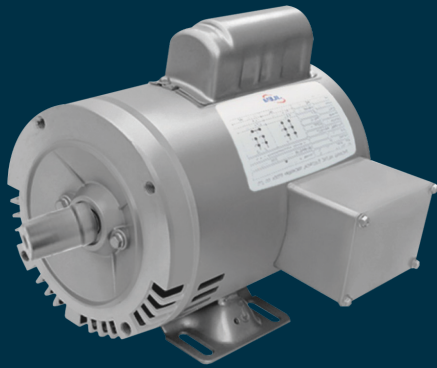
### FEATURES

- + High Efficient
- + Design B
- + Class F Insulation
- + 40°C Ambient Temperature
- + Double Shielded Bearings
- + Rolled Steel Frame & Aluminum End Shield

HP	RPM	VOLTS	FRAME	MODEL	SF	FL AMPS	FL EFF	WT
1/4	3600	115 / 230	48	RS142D01	1	3.4 / 1.7	61%	17 lbs
	1800	115 / 230	48	RS144D01	1	4.2 / 2.1	65%	19 lbs
1/3	3600	115 / 230	48	RS132D01	1.15	4.2 / 2.1	65%	21 lbs
		115 / 230	56	RS132D02	1.35	5.2 / 2.6	58%	23 lbs
	1800	115 / 230	48	RS134D01	1.15	5.2 / 2.6	68%	23 lbs
		115 / 230	56	RS134D02	1	4.8 / 2.4	65%	22 lbs
1/2	3600	115 / 230	48	RS122D01	1.15	5.8 / 2.9	69%	23 lbs
		115 / 230	56	RS122D02	1.15	6.6 / 3.3	65%	26 lbs
	1800	115 / 230	48	RS124D01	1.15	7.2 / 3.6	71%	26 lbs
		115 / 230	56	RS124D02	1.25	6.4 / 3.2	69%	23 lbs
3/4	3600	115 / 230	56	RS342D01	1.15	8.6 / 4.3	70%	30 lbs
	1800	115 / 230	56	RS344D01	1	8.8 / 4.4	73%	25 lbs
1	3600	115 / 230	56	RS12D01	1.15	10.8 / 5.4	73%	36 lbs
	1800	115 / 230	56	RS14D01	1.15	11.2 / 5.6	75%	40 lbs
1.5	3600	115 / 230	143T	RS322D01	1.15	13.8 / 6.9	74%	45 lbs
	1800	115 / 230	145T	RS324D01	1	13.4 / 6.7	76%	48 lbs
2	3600	115 / 230	56	RS22D01	1.15	18.0 / 9.0	76%	40 lbs
		230	182T	RS22D02	1.15	9	76%	51 lbs
	1800	115 / 230	56	RS24D01	1.15	17.8 / 8.9	77%	75 lbs
		230	182T	RS24D02	1.15	8.9	77%	77 lbs
3	3600	230	182T	RS32D01	1	13.1	78%	81 lbs
	1800	230	182T	RS34D01	1	13	79%	75 lbs
5	3600	230	184T	RS52D01	1	21.3	80%	97 lbs
	1800	230	184T	RS54D01	1	20.8	82%	90 lbs
7.5	3600	230	213T	RS72D01	1	30.9	83%	86 lbs
	1800	230	213T	RS74D01	1	30.5	84%	126 lbs
10	3600	230	215T	RS102D01	1	40.2	85%	130 lbs
	1800	230	215T	RS104D01	1	39.7	86%	135 lbs

Dimensions & Mounting

Page 168



# Single-Phase Motors ODP Rolled Steel

*C-Face / General Purpose Motors*

## APPLICATIONS

- + General Purpose where Contaminants are Minimal
- + Compressors
- + Fans
- + Material Handling
- + Pumps

## FEATURES

- + High Efficient
- + Design B
- + Class F Insulation
- + 40°C Ambient Temperature
- + Double Shielded Bearings
- + Rolled Steel Frame & Aluminum End Shield

HP	RPM	VOLTS	FRAME	MODEL		SF	FL AMPS	FL EFF	WT
				FOOTED	FOOTLESS				
1/4	3600	115 / 230	48C	RS142D11	RS142D21	1.35	3.8 / 1.9	58%	17 lbs
	1800	115 / 230	48C	RS144D11	RS144D21	1.35	4.6 / 2.3	61%	19 lbs
1/3	3600	115 / 230	48C	RS132D11	RS132D21	1.35	4.8 / 2.4	62%	21 lbs
		115 / 230	56C	RS132D12	RS132D22	1.35	5.2 / 2.6	58%	23 lbs
	1800	115 / 230	48C	RS134D11	RS134D21	1.35	5.4 / 2.7	65%	23 lbs
		115 / 230	56C	RS134D12	RS134D22	1.35	4.8 / 2.4	65%	22 lbs
1/2	3600	115 / 230	48C	RS122D11	RS122D21	1.25	6.2 / 3.1	68%	23 lbs
		115 / 230	56C	RS122D12	RS122D22	1.25	6.6 / 3.3	65%	26 lbs
	1800	115 / 230	48C	RS124D11	RS124D21	1.25	7.6 / 3.8	69%	26 lbs
		115 / 230	56C	RS124D12	RS124D21	1.25	6.4 / 3.2	69%	23 lbs
3/4	3600	115 / 230	56C	RS342D11	RS342D21	1.25	8.6 / 4.3	70%	30 lbs
	1800	115 / 230	56C	RS344D11	RS342D21	1.25	8.8 / 4.4	73%	25 lbs
1	3600	115 / 230	56C	RS12D11	RS12D21	1.25	10.8 / 5.4	73%	36 lbs
	1800	115 / 230	56C	RS14D11	RS14D21	1.15	11.2 / 5.6	75%	40 lbs
1.5	3600	115 / 230	143TC	RS322D11	RS322D21	1.15	13.8 / 6.9	74%	45 lbs
	1800	115 / 230	145TC	RS324D11	RS344D21	1.15	13.4 / 6.7	76%	48 lbs
2	3600	115 / 230	145TC	RS22D11	RS22D21	1.15	18.0 / 9.0	76%	40 lbs
	1800	115 / 230	145TC	RS24D11	RS24D21	1.15	17.8 / 8.9	77%	75 lbs
		3600	230	182TC	RS32D11	RS32D21	1.15	13.1	78%
3	1800	230	182TC	RS34D11	RS34D21	1.15	13	79%	78 lbs
	3600	230	184TC	RS52D11	RS52D21	1.15	21.3	80%	97 lbs
5	1800	230	184TC	RS54D11	RS54D21	1.15	20.8	82%	90 lbs



# Three-Phase Motors

## TEFC Rolled Steel

Foot Mount / General Purpose Motors

### APPLICATIONS

- + General Purpose in Damp & Dusty/Dirty Environments
- + Compressors
- + Fans
- + Material Handling
- + Pumps

### FEATURES

- + High Efficient
- + Design B
- + Class F Insulation
- + 40°C Ambient Temperature
- + Double Shielded Bearings
- + Rolled Steel Frame & Aluminum End Shield

HP	RPM	VOLTS	FRAME	MODEL	SF	FL AMPS	FL EFF	WT
1/4	3600	230 / 460	48	RT142T01	1	1.11 / 0.55	68%	17 lbs
	1800	230 / 460	48	RT144T01	1	1.25 / 0.63	60.2%	19 lbs
1/3	3600	230 / 460	48	RT132T01	1	1.15 / 0.57	72%	21 lbs
		230 / 460	56	RT132T02	1	1.16 / 0.58	72%	23 lbs
	1800	230 / 460	48	RT134T01	1	1.32 / 0.66	67%	23 lbs
		230 / 460	56	RT134T02	1	1.38 / 0.69	67%	22 lbs
1/2	3600	230 / 460	48	RT122T01	1	1.57 / 0.78	74%	23 lbs
		230 / 460	56	RT122T02	1	1.65 / 0.83	74%	26 lbs
	1800	230 / 460	48	RT124T01	1	1.7 / 0.85	70%	26 lbs
		230 / 460	56	RT124T02	1	1.84 / 0.92	70%	23 lbs
3/4	3600	230 / 460	56	RT342T01	1	2.34 / 1.17	76%	30 lbs
	1800	230 / 460	56	RT344T01	1	2.57 / 1.28	74%	25 lbs
1	3600	230 / 460	143T	RT12T01	1.25	3.13 / 1.57	77%	39 lbs
	1800	230 / 460	56	RT14T01	1.25	2.98 / 1.49	85.5%	42 lbs
1.5	3600	230 / 460	143T	RT322T01	1.25	3.96 / 1.98	84%	51 lbs
	1800	230 / 460	143T	RT324T01	1.25	4.2 / 2.1	86.5%	50 lbs
2	3600	230 / 460	145T	RT22T01	1.25	5.31 / 2.65	85.5%	55 lbs
		230 / 460	56	RT24T01	1.25	5.65 / 2.83	86.5%	52 lbs
	1800	230 / 460	145T	RT24T02	1.25	5.51 / 2.76	86.5%	53 lbs
3	3600	230 / 460	145T	RT32T01	1.25	7.71 / 3.59	86.5%	83 lbs
	1800	230 / 460	182T	RT34T01	1.25	7.81 / 3.91	89.5%	76 lbs
5	3600	230 / 460	184T	RT52T01	1.25	11.5 / 5.77	88.5%	98 lbs
	1800	230 / 460	184T	RT54T01	1.25	13.1 / 6.57	89.5%	92 lbs
7.5	3600	230 / 460	184T	RT72T01	1.25	17.5 / 8.76	89.5%	87 lbs
	1800	230 / 460	213T	RT74T01	1.25	18.1 / 9.17	91.7%	128 lbs
10	3600	230 / 460	215T	RT102T01	1.25	23.7 / 11.9	90.2%	123 lbs
	1800	230 / 460	215T	RT104T01	1.25	24.7 / 12.4	91.7%	136 lbs

Dimensions & Mounting

Page 170



# Three-Phase Motors TEFC Rolled Steel

*C-Face / General Purpose Motors*

## APPLICATIONS

- + General Purpose in Damp & Dusty/Dirty Environments
- + Compressors
- + Fans
- + Material Handling
- + Pumps

## FEATURES

- + High Efficient
- + Design B
- + Class F Insulation
- + 40°C Ambient Temperature
- + Double Shielded Bearings
- + Rolled Steel Frame & Aluminum End Shield

HP	RPM	VOLTS	FRAME	MODEL		SF	FL AMPS	FL EFF	WT
				FOOTED	FOOTLESS				
1/4	3600	230 / 460	48C	RT142T11	RT142T21	1	1.11 / 0.55	68%	17 lbs
	1800	230 / 460	48C	RT144T11	RT144T21	1	1.25 / 0.63	60.2%	19 lbs
1/3	3600	230 / 460	48C	RT132T11	RT132T21	1	1.15 / 0.57	72%	21 lbs
		230 / 460	56C	RT132T12	RT132T22	1	1.16 / 0.58	72%	23 lbs
	1800	230 / 460	48C	RT134T11	RT134T21	1	1.32 / 0.66	67%	23 lbs
		230 / 460	56C	RT134T12	RT134T22	1	1.38 / 0.69	67%	22 lbs
1/2	3600	230 / 460	48C	RT122T11	RT122T21	1	1.57 / 0.78	74%	23 lbs
		230 / 460	56C	RT122T12	RT122T22	1	1.65 / 0.83	74%	26 lbs
	1800	230 / 460	48C	RT124T11	RT124T21	1	1.7 / 0.85	70%	26 lbs
		230 / 460	56C	RT124T12	RT124T22	1	1.84 / 0.92	70%	23 lbs
3/4	3600	230 / 460	56C	RT342T11	RT342T21	1	2.34 / 1.17	76%	30 lbs
	1800	230 / 460	56C	RT344T11	RT344T21	1	2.57 / 1.28	74%	25 lbs
1	3600	230 / 460	143TC	RT12T11	RT12T21	1.25	3.13 / 1.57	77%	39 lbs
	1800	230 / 460	56C	RT14T11	RT14T21	1.25	2.98 / 1.49	85.5%	42 lbs
1.5	3600	230 / 460	143TC	RT322T11	RT322T21	1.25	3.96 / 1.98	84%	51 lbs
	1800	230 / 460	143TC	RT324T11	RT324T21	1.25	4.2 / 2.1	86.5%	50 lbs
2	3600	230 / 460	145TC	RT22T11	RT22T21	1.25	5.31 / 2.65	85.5%	55 lbs
		230 / 460	56C	RT24T11	RT24T21	1.25	5.65 / 2.83	86.5%	52 lbs
	1800	230 / 460	145TC	RT24T12	RT24T22	1.25	5.51 / 2.76	86.5%	53 lbs
3	3600	230 / 460	145TC	RT32T11	RT32T21	1.25	7.71 / 3.59	86.5%	83 lbs
	1800	230 / 460	182TC	RT34T11	RT34T21	1.25	7.81 / 3.91	89.5%	76 lbs
5	3600	230 / 460	184TC	RT52T11	RT52T21	1.25	11.5 / 5.77	88.5%	98 lbs
	1800	230 / 460	184TC	RT54T11	RT54T21	1.25	13.1 / 6.57	89.5%	92 lbs
7.5	3600	230 / 460	184TC	RT72T11	RT72T21	1.25	17.5 / 8.76	89.5%	87 lbs
	1800	230 / 460	213TC	RT74T11	RT74T21	1.25	18.1 / 9.17	91.7%	128 lbs
10	3600	230 / 460	215TC	RT102T11	RT102T21	1.25	23.7 / 11.9	90.2%	123 lbs
	1800	230 / 460	215TC	RT104T11	RT104T21	1.25	24.7 / 12.4	91.7%	136 lbs

*Dimensions & Mounting*  
Page 171



# Three-Phase Motors

## ODP Rolled Steel

Foot Mount / General Purpose Motors

### APPLICATIONS

- + General Purpose where Contaminants are Minimal
- + Compressors
- + Fans
- + Material Handling
- + Pumps

### FEATURES

- + High Efficient
- + Design B
- + Class F Insulation
- + 40°C Ambient Temperature
- + Double Shielded Bearings
- + Rolled Steel Frame & Aluminum End Shield

HP	RPM	VOLTS	FRAME	MODEL	SF	FL AMPS	FL EFF	WT
1/4	3600	230 / 460	48	RT142D01	1.35	1.11 / 0.55	68.1%	17 lbs
	1800	230 / 460	48	RT144D01	1.35	1.25 / 0.63	60.2%	19 lbs
1/3	3600	230 / 460	48	RT132D01	1.35	1.15 / 0.57	72%	21 lbs
		230 / 460	56	RT132D02	1.35	1.16 / 0.58	72%	23 lbs
	1800	230 / 460	48	RT134D01	1.35	1.32 / 0.66	67%	23 lbs
		230 / 460	56	RT134D02	1.25	1.38 / 0.69	67%	22 lbs
1/2	3600	230 / 460	48	RT142D01	1.25	1.53 / 0.76	74%	23 lbs
		230 / 460	56	RT142D02	1.25	1.61 / 0.83	74%	26 lbs
	1800	230 / 460	48	RT144D01	1.25	1.7 / 0.85	70%	26 lbs
		230 / 460	56	RT144D02	1.25	1.84 / 0.92	70%	23 lbs
3/4	3600	230 / 460	48	RT342D01	1.25	2.34 / 1.17	76%	30 lbs
	1800	230 / 460	56	RT344D01	1.25	2.57 / 1.28	74%	25 lbs
1	3600	230 / 460	143T	RT12D01	1.15	3.13 / 1.57	77%	39 lbs
	1800	230 / 460	56H	RT14D01	1.15	2.89 / 1.49	85.5%	42 lbs
1.5	3600	230 / 460	143T	RT322D01	1.15	3.96 / 1.98	84%	52 lbs
	1800	230 / 460	56H	RT324D01	1.15	4.2 / 2.1	86.5%	50 lbs
2	3600	230 / 460	145T	RT222D01	1.15	5.31 / 2.65	85.5%	54 lbs
		230 / 460	145T	RT224D01	1.15	5.65 / 2.83	86.5%	52 lbs
	1800	230 / 460	56HZ	RT224D02	1.15	5.51 / 2.76	86.5%	53 lbs
3	3600	230 / 460	182T	RT32D01	1.15	7.26 / 3.63	85.5%	82 lbs
	1800	230 / 460	182T	RT34D01	1.15	7.81 / 3.91	89.5%	76 lbs
5	3600	230 / 460	182T	RT52D01	1.15	11.8 / 5.9	86.5%	98 lbs
	1800	230 / 460	184T	RT54D01	1.15	13.1 / 6.57	89.5%	92 lbs
7.5	3600	230 / 460	184T	RT72D01	1.15	17.7 / 8.86	88.5%	88 lbs
	1800	230 / 460	213T	RT74D01	1.15	18.3 / 9.14	91%	127 lbs
10	3600	230 / 460	213T	RT102D01	1.15	23.9 / 12	89.5%	122 lbs
	1800	230 / 460	215T	RT104D01	1.15	24.7 / 12.4	91.7%	136 lbs

Dimensions & Mounting

Page 172



# Three-Phase Motors ODP Rolled Steel

*C-Face / General Purpose Motors*

## APPLICATIONS

- + General Purpose where Contaminants are Minimal
- + Compressors
- + Fans
- + Material Handling
- + Pumps

## FEATURES

- + High Efficient
- + Design B
- + Class F Insulation
- + 40°C Ambient Temperature
- + Double Shielded Bearings
- + Rolled Steel Frame & Aluminum End Shield

HP	RPM	VOLTS	FRAME	MODEL		SF	FL AMPS	FL EFF	WT
				FOOTED	FOOTLESS				
1/4	3600	230 / 460	48C	RT142D11	RT142D21	1.35	1.11 / 0.55	68.1%	17 lbs
	1800	230 / 460	48C	RT144D11	RT144D21	1.35	1.25 / 0.63	60.2%	19 lbs
1/3	3600	230 / 460	48C	RT132D11	RT132D21	1.35	1.15 / 0.57	72%	21 lbs
		230 / 460	56C	RT132D12	RT132D22	1.35	1.16 / 0.58	72%	23 lbs
	1800	230 / 460	48C	RT134D11	RT134D21	1.35	1.32 / 0.66	67%	23 lbs
		230 / 460	56C	RT134D12	RT134D22	1.25	1.38 / 0.69	67%	22 lbs
1/2	3600	230 / 460	48C	RT142D11	RT142D21	1.25	1.53 / 0.76	74%	23 lbs
		230 / 460	56C	RT142D12	RT142D22	1.25	1.61 / 0.83	74%	26 lbs
	1800	230 / 460	48C	RT144D11	RT144D21	1.25	1.7 / 0.85	70%	26 lbs
		230 / 460	56C	RT144D12	RT144D22	1.25	1.84 / 0.92	70%	23 lbs
3/4	3600	230 / 460	48C	RT342D11	RT342D21	1.25	2.34 / 1.17	76%	30 lbs
	1800	230 / 460	56C	RT344D11	RT344D21	1.25	2.57 / 1.28	74%	25 lbs
1	3600	230 / 460	143TC	RT12D11	RT12D21	1.15	3.13 / 1.57	77%	39 lbs
	1800	230 / 460	56HC	RT14D11	RT14D21	1.15	2.89 / 1.49	85.5%	42 lbs
1.5	3600	230 / 460	143TC	RT322D11	RT322D21	1.15	3.96 / 1.98	84%	52 lbs
	1800	230 / 460	56HC	RT324D11	RT324D21	1.15	4.2 / 2.1	86.5%	50 lbs
2	3600	230 / 460	145TC	RT222D11	RT222D21	1.15	5.31 / 2.65	85.5%	54 lbs
		230 / 460	145TC	RT224D11	RT224D21	1.15	5.65 / 2.83	86.5%	52 lbs
	1800	230 / 460	56HZC	RT224D12	RT224D22	1.15	5.51 / 2.76	86.5%	53 lbs
3	3600	230 / 460	182TC	RT32D11	RT32D21	1.15	7.26 / 3.63	85.5%	82 lbs
	1800	230 / 460	182TC	RT34D11	RT34D21	1.15	7.81 / 3.91	89.5%	76 lbs
5	3600	230 / 460	182TC	RT52D11	RT52D21	1.15	11.8 / 5.9	86.5%	98 lbs
	1800	230 / 460	184TC	RT54D11	RT54D21	1.15	13.1 / 6.57	89.5%	92 lbs
7.5	3600	230 / 460	184TC	RT72D11	RT72D21	1.15	17.7 / 8.86	88.5%	88 lbs
	1800	230 / 460	213TC	RT74D11	RT74D21	1.15	18.3 / 9.14	91%	127 lbs
10	3600	230 / 460	213TC	RT102D11	RT102D21	1.15	23.9 / 12	89.5%	122 lbs
	1800	230 / 460	215TC	RT104D11	RT104D21	1.15	24.7 / 12.4	91.7%	136 lbs

*Dimensions & Mounting*  
Page 173





# EISA High Efficient Motors TEFC Cast Iron

*Foot Mount / General Purpose Motors*

## APPLICATIONS

- + General Purpose in Damp & Dusty/Dirty Environments
- + Process Industries
- + Blowers
- + Compressors
- + Conveyors
- + Fans
- + Pumps

## FEATURES

- + EISA Compliant High Efficient
- + Service Factor 1.15
- + Design C High Torque
- + Class F Insulation
- + 40°C Ambient Temperature
- + Cast Iron Frame & End Shield

HP	RPM	VOLTS	FRAME	MODEL	FL AMPS	FL EFF	WT
1	3600	208-230 / 460	56	HE12T01	1.44	81%	44 lbs
	1800	208-230 / 460	56	HE14T01	1.47	80%	46 lbs
		208-230 / 460	143T	HE14T02	1.49	82.5%	47 lbs
	1200	208-230 / 460	56	HE16T01	1.92	76.7%	46 lbs
		208-230 / 460	145T	HE16T02	1.7	80%	47 lbs
1.5	3600	208-230 / 460	56	HE322T01	1.97	82.5%	48 lbs
		208-230 / 460	143T	HE322T02	1.99	82.5%	45 lbs
	1800	208-230 / 460	56	HE324T01	2.11	81%	52 lbs
		208-230 / 460	145T	HE324T02	2.05	84%	54 lbs
	1200	208-230 / 460	182T	HE326T01	2.38	85.5%	77 lbs
		208-230 / 460	56	HE22T01	2.67	84%	58 lbs
2	3600	208-230 / 460	145T	HE22T02	2.6	84%	47 lbs
		208-230 / 460	56	HE24T01	2.84	82%	61 lbs
	1800	208-230 / 460	145T	HE24T02	2.7	84%	56 lbs
		208-230 / 460	184T	HE26T01	3.2	86.5%	88 lbs
3	3600	208-230 / 460	56	HE32T01	3.8	84.5%	67 lbs
		208-230 / 460	182T	HE32T02	3.59	85.5%	106 lbs
	1800	208-230 / 460	182T	HE34T01	3.9	87.5%	97 lbs
	1200	208-230 / 460	213T	HE36T01	4.15	87.5%	123 lbs
5	3600	208-230 / 460	184T	HE52T01	5.9	87.5%	114 lbs
	1800	208-230 / 460	184T	HE54T01	6.48	87.5%	102 lbs
	1200	208-230 / 460	215T	HE56T01	6.8	87.5%	175 lbs
7.5	3600	208-230 / 460	213T	HE72T01	8.66	88.5%	150 lbs
	1800	208-230 / 460	213T	HE74T01	9.53	89.5%	150 lbs
	1200	208-230 / 460	254T	HE76T01	9.53	89.5%	262 lbs
10	3600	208-230 / 460	215T	HE102T01	11.7	89.5%	150 lbs
	1800	208-230 / 460	215T	HE104T01	12.8	90.2%	165 lbs
	1200	208-230 / 460	256T	HE106T01	13.4	89.5%	304 lbs
15	3600	208-230 / 460	254T	HE152T01	17	90.2%	280 lbs
	1800	208-230 / 460	254T	HE154T01	17.9	91%	266 lbs
	1200	208-230 / 460	284T	HE156T01	17.3	91%	346 lbs
20	3600	208-230 / 460	256T	HE202T01	23.3	90.2%	313 lbs
	1800	208-230 / 460	256T	HE204T01	24.4	91%	313 lbs
	1200	208-230 / 460	286T	HE206T01	23.5	91%	470 lbs

(Continued)

HP	RPM	VOLTS	FRAME	MODEL	FL AMPS	FL EFF	WT
25	3600	208-230 / 460	284TS	HE252T01	29	91%	353 lbs
	1800	208-230 / 460	284TS	HE254T01	29.6	92.4%	437 lbs
		208-230 / 460	284T	HE254T02	29.6	92.4%	437 lbs
	1200	208-230 / 460	324T	HE256T01	29.8	91.7%	572 lbs
30	3600	208-230 / 460	286TS	HE302T01	33.8	91%	404 lbs
	1800	208-230 / 460	286TS	HE304T01	34.4	92.4%	481 lbs
		208-230 / 460	286T	HE304T02	34.4	92.4%	481 lbs
	1200	208-230 / 460	326T	HE306T01	35.4	91.7%	625 lbs
40	3600	208-230 / 460	324TS	HE402T01	46.1	91.7%	561 lbs
	1800	208-230 / 460	324TS	HE404T01	47.6	93%	587 lbs
		208-230 / 460	324T	HE404T02	47.6	93%	587 lbs
	1200	208-230 / 460	364T	HE406T01	47.1	93%	992 lbs
50	3600	208-230 / 460	326TS	HE502T01	56.5	92.4%	594 lbs
	1800	208-230 / 460	326TS	HE504T01	57.8	93.6%	640 lbs
		208-230 / 460	326T	HE504T02	57.8	93.6%	640 lbs
	1200	208-230 / 460	365T	HE506T01	58.1	93%	992 lbs
60	3600	208-230 / 460	364TS	HE602T01	69	93%	917 lbs
	1800	208-230 / 460	364TS	HE604T01	67	93.6%	963 lbs
		208-230 / 460	364T	HE604T02	67	93.6%	963 lbs
	1200	208-230 / 460	404T	HE606T01	70.1	93.6%	1222 lbs
75	3600	208-230 / 460	365TS	HE752T01	82.5	93%	1025 lbs
	1800	208-230 / 460	365TS	HE754T01	82.4	94.1%	1010 lbs
		208-230 / 460	365T	HE754T02	82.4	94.1%	1010 lbs
	1200	208-230 / 460	405T	HE756T01	86.8	93.6%	1291 lbs
100	3600	208-230 / 460	405TS	HE1002T01	113	93.6%	1361 lbs
	1800	208-230 / 460	405TS	HE1004T01	115	94.5%	1273 lbs
		208-230 / 460	405T	HE1004T02	115	94.5%	1273 lbs
	1200	208-230 / 460	444T	HE1006T01	121	94.1%	1720 lbs
125	3600	460	444TS	HE1252T01	131	94.5%	1801 lbs
	1800	460	444TS	HE1254T01	138	94.5%	1647 lbs
		460	444T	HE1254T02	138	94.5%	1647 lbs
	1200	460	445T	HE1256T01	141	94.1%	2050 lbs
150	3600	460	445TS	HE1502T01	160	94.5%	1865 lbs
	1800	460	445TS	HE1504T01	168	95%	1841 lbs
		460	445T	HE1504T02	168	95%	1841 lbs
	1200	460	447T	HE1506T01	171	95%	2167 lbs
200	3600	460	447TS	HE2002T01	223	95%	2072 lbs
	1800	460	445T	HE2004T01	230	95%	2117 lbs
		460	447T	HE2004T02	230	95%	2194 lbs
	1200	460	447T	HE2006T01	236	95%	2467 lbs

CONTROLS

ENERGY STORAGE

MOTORS

PUMPS

VALVES

COMPRESSORS

PNEUMATICS

SAWMILLS

METAL RECYCLING

TRANSIT & RAILROAD

WATER & WASTEWATER

DIMENSIONS & MOUNTING



# EISA High Efficient Motors TEFC Cast Iron

*C-Face / General Purpose Motors*

## FEATURES

- + EISA Compliant High Efficient
- + Service Factor 1.15
- + Design C High Torque
- + Class F Insulation
- + 40°C Ambient Temperature
- + Cast Iron Frame & End Shield

## APPLICATIONS

- + General Purpose in Damp & Dusty/Dirty Environments
- + Process Industries
- + Blowers
- + Compressors
- + Conveyors
- + Fans
- + Pumps

HP	RPM	VOLTS	FRAME	MODEL		FL AMPS	FL EFF	WT
				FOOTED	FOOTLESS			
1	3600	208-230 / 460	56C	HE12T11	HE12T21	1.44	81%	44 lbs
			56C	HE14T11	HE14T21	1.47	80%	46 lbs
	1800	208-230 / 460	143TC	HE14T12	HE14T22	1.49	82.5%	47 lbs
			56C	HE16T11	HE16T21	1.92	76.7%	46 lbs
	1200	208-230 / 460	145TC	HE16T12	HE16T22	1.7	80%	47 lbs
			56C	HE322T11	HE322T21	1.97	82.5%	48 lbs
1.5	3600	208-230 / 460	143TC	HE322T12	HE322T22	1.99	82.5%	45 lbs
			56C	HE324T11	HE324T21	2.11	81%	52 lbs
	1800	208-230 / 460	145TC	HE324T12	HE324T22	2.05	84%	54 lbs
			182TC	HE326T11	HE326T21	2.38	85.5%	77 lbs
	1200	208-230 / 460	56C	HE22T11	HE22T21	2.67	84%	58 lbs
			145TC	HE22T12	HE22T22	2.6	84%	47 lbs
2	3600	208-230 / 460	56C	HE24T11	HE24T21	2.84	82%	61 lbs
			145TC	HE24T12	HE24T22	2.7	84%	56 lbs
	1800	208-230 / 460	145TC	HE24T12	HE24T22	2.7	84%	56 lbs
			184TC	HE26T11	HE26T21	3.2	86.5%	88 lbs
	1200	208-230 / 460	56C	HE32T11	HE32T21	3.8	84.5%	67 lbs
			182TC	HE32T12	HE32T22	3.59	85.5%	106 lbs
3	3600	208-230 / 460	182TC	HE34T11	HE34T21	3.9	87.5%	97 lbs
			213TC	HE36T11	HE36T21	4.15	87.5%	123 lbs
	1800	208-230 / 460	184TC	HE52T11	HE52T21	5.9	87.5%	114 lbs
			184TC	HE54T11	HE54T21	6.48	87.5%	102 lbs
	1200	208-230 / 460	215TC	HE56T11	HE56T21	6.8	87.5%	175 lbs
			213TC	HE72T11	HE72T21	8.66	88.5%	150 lbs
7.5	3600	208-230 / 460	213TC	HE74T11	HE74T21	9.53	89.5%	150 lbs
			254TC	HE76T11	HE76T21	9.53	89.5%	262 lbs
	1800	208-230 / 460	215TC	HE102T11	HE102T21	11.7	89.5%	150 lbs
			215TC	HE104T11	HE104T21	12.8	90.2%	165 lbs
	1200	208-230 / 460	256TC	HE106T11	HE106T21	13.4	89.5%	304 lbs
			254TC	HE152T11	HE152T21	17	90.2%	280 lbs
15	3600	208-230 / 460	254TC	HE154T11	HE154T21	17.9	91%	266 lbs
			254TC	HE154T11	HE154T21	17.9	91%	266 lbs

(Continued)

HP	RPM	VOLTS	FRAME	MODEL		FL AMPS	FL EFF	WT
				FOOTED	FOOTLESS			
20	3600	208-230 / 460	256TC	HE202T11	HE202T21	23.3	90.2%	313 lbs
	1800	208-230 / 460	256TC	HE204T11	HE204T21	24.4	91%	313 lbs
25	3600	208-230 / 460	284TSC	HE252T11	HE252T21	29	91%	353 lbs
	1800	208-230 / 460	284TSC	HE254T11	HE254T21	29.6	92.4%	437 lbs
	1800	208-230 / 460	284TC	HE254T12	HE254T22	29.6	92.4%	437 lbs
30	3600	208-230 / 460	286TSC	HE302T11	HE302T21	33.8	91%	404 lbs
	1800	208-230 / 460	286TSC	HE304T11	HE304T21	34.4	92.4%	481 lbs
	1800	208-230 / 460	286TC	HE304T12	HE304T22	34.4	92.4%	481 lbs
40	1800	208-230 / 460	324TSC	HE404T11	-	47.6	93%	587 lbs
	1800	208-230 / 460	324TC	HE404T12	-	47.6	93%	587 lbs
50	1800	208-230 / 460	326TSC	HE504T11	-	57.8	93.6%	640 lbs
	1800	208-230 / 460	326TC	HE504T12	-	57.8	93.6%	640 lbs
60	1800	208-230 / 460	364TSC	HE604T11	-	67	93.6%	963 lbs
	1800	208-230 / 460	364TC	HE604T12	-	67	93.6%	963 lbs
75	1800	208-230 / 460	365TSC	HE754T11	-	82.4	94.1%	1010 lbs
	1800	208-230 / 460	365TC	HE754T12	-	82.4	94.1%	1010 lbs
	1800	460	365TC	HE754T13	-	82.4	94.1%	1010 lbs
100	1800	208-230 / 460	405TSC	HE1004T11	-	115	94.5%	1273 lbs
	1800	460	405TSC	HE1004T12	-	115	94.5%	1273 lbs
	1800	208-230 / 460	405TC	HE1004T13	-	115	94.5%	1273 lbs
	1800	460	405TC	HE1004T14	-	115	94.5%	1273 lbs
125	1800	460	444TC	HE1254T11	-	138	94.5%	1647 lbs
150	1800	460	445TC	HE1504T11	-	168	95%	1841 lbs
200	1800	460	445TC	HE2004T11	-	230	95%	2194 lbs

CONTROLS

ENERGY STORAGE

MOTORS

PUMPS

VALVES

COMPRESSORS

PNEUMATICS

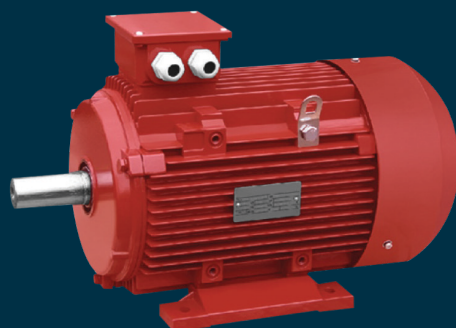
SAWMILLS

METAL RECYCLING

TRANSIT & RAILROAD

WATER & WASTEWATER

DIMENSIONS & MOUNTING



# EISA High Efficient Motors TEFC Aluminum

*Foot Mount / General Purpose Motors*

## FEATURES

- + EISA Compliant High Efficient
- + Low Noise
- + Service Factor 1.15
- + Design C High Torque
- + Class F Insulation
- + 40°C Ambient Temperature
- + Aluminum Frame & End Shield (D Flange Available)
- + Removable Base

## APPLICATIONS

- + General Purpose
- + Blowers
- + Compressors
- + Conveyors
- + Fans
- + Pumps
- + Reducers

HP	RPM	VOLTS	FRAME	MODEL	FL AMPS	FL EFF	WT
1/4	3260	208-230 / 460	48	AE142T01	0.96-0.9 / 0.43	65%	17 lbs
	1570	208-230 / 460	48	AE144T01	1.14-1 / 0.52	60%	18 lbs
	1020	208-230 / 460	56	AE146T01	1.35-1.2 / 0.61	56%	23 lbs
1/3	3260	208-230 / 460	48	AE132T01	1.26-1.1 / 0.57	68%	18 lbs
	1595	208-230 / 460	48	AE132T01	1.44-1.3 / 0.65	65%	19 lbs
1/2	3285	208-230 / 460	48	AE122T01	1.81-1.6 / 0.82	70%	19 lbs
	1595	208-230 / 460	56	AE124T01	2.04-1.8 / 0.92	67%	26 lbs
	1060	208-230 / 460	56	AE126T01	2.37-2.1 / 1.07	62%	24 lbs
3/4	3285	208-230 / 460	48	AE342T01	2.55-2.3 / 1.15	73%	20 lbs
	1665	208-230 / 460	56	AE344T01	2.86-2.6 / 1.29	71.1%	28 lbs
	1060	208-230 / 460	143T	AE346T01	3.26-3 / 1.48	65%	27 lbs
1	3405	208-230 / 460	56	AE12T01	3.34-3 / 1.51	75.1%	26 lbs
	1665	208-230 / 460	143T	AE14T01	3.75-3.4 / 1.69	73.1%	29 lbs
	1090	208-230 / 460	145T	AE16T01	4.19-3.8 / 1.89	69%	29 lbs
	815	208-230 / 460	182T	AE18T01	4.38-4 / 1.98	71%	57 lbs
1.5	3405	208-230 / 460	143T	AE322T01	4.72-4.3 / 2.13	77%	28 lbs
	1665	208-230 / 460	145T	AE324T01	5.2-4.7 / 2.35	76.3%	30 lbs
	1090	208-230 / 460	182T	AE326T01	5.8-5.2 / 2.62	72.1%	57 lbs
	815	208-230 / 460	184T	AE328T01	6.06-5.5 / 2.74	73%	62 lbs
2	3405	208-230 / 460	145T	AE22T01	6.27-5.7 / 2.84	79%	30 lbs
	1665	208-230 / 460	145T	AE24T01	6.71-6.1 / 3.03	78.6%	31 lbs
	1100	208-230 / 460	184T	AE26T01	7.29-6.6 / 3.3	76.1%	64 lbs
	825	208-230 / 460	213T	AE28T01	8.05-7.3 / 3.64	75%	84 lbs
3	3405	208-230 / 460	145T	AE32T01	8.86-8 / 4.01	81.1%	33 lbs
	1690	208-230 / 460	182T	AE34T01	9.28-8.4 / 4.2	81.2%	62 lbs
	1150	208-230 / 460	213T	AE36T01	9.91-9 / 4.48	81.1%	84 lbs
	845	208-230 / 460	215T	AE38T01	11-10 / 4.99	78%	93 lbs
5	3455	208-230 / 460	184T	AE52T01	13.8-13 / 6.25	84.4%	62 lbs
	1720	208-230 / 460	184T	AE54T01	14.7-13 / 6.72	84.3%	66 lbs
	1150	208-230 / 460	215T	AE56T01	16.5-15 / 7.44	82.1%	97 lbs
	860	208-230 / 460	254T	AE58T01	17.4-16 / 7.85	81%	152 lbs

*Dimensions & Mounting*

*Page 180*

(Continued)

HP	RPM	VOLTS	FRAME	MODEL	FL AMPS	FL EFF	WT
7.5	3480	208-230 / 460	184T	AE72T01	20.2-18 / 9.13	85.9%	86 lbs
	1725	208-230 / 460	213T	AE74T01	21.4-19 / 9.69	85.8%	93 lbs
	1150	208-230 / 460	254T	AE76T01	23.6-21 / 10.7	84.1%	150 lbs
	860	208-230 / 460	256T	AE78T01	24.9-22 / 11.2	83%	192 lbs
10	3480	208-230 / 460	215T	AE102T01	27.1-25 / 12.3	87.2%	110 lbs
	1725	208-230 / 460	215T	AE104T01	28.5-26 / 12.9	87.1%	107 lbs
	1150	208-230 / 460	256T	AE106T01	31.4-28 / 14.2	86.1%	161 lbs
15	3515	208-230 / 460	254T	AE152T01	38.8-35 / 17.5	88.5%	150 lbs
	1750	208-230 / 460	254T	AE154T01	41.1-37 / 18.6	88.5%	163 lbs
20	3515	208-230 / 460	256T	AE202T01	52.3-47 / 23.6	89.5%	181 lbs
	1750	208-230 / 460	256T	AE204T01	54.7-49 / 24.7	89.5%	191 lbs
25	3515	208-230 / 460	284T	AE252T01	63.3-57 / 28.6	90.2%	225 lbs
	1760	208-230 / 460	284T	AE254T01	66.3-60 / 30	90.1%	223 lbs
30	3525	208-230 / 460	286T	AE302T01	74.8-68 / 33.8	90.7%	265 lbs
	1760	208-230 / 460	286T	AE304T01	78.4-71 / 35.4	90.6%	247 lbs

CONTROLS

ENERGY STORAGE

MOTORS

PUMPS

VALVES

COMPRESSORS

PNEUMATICS

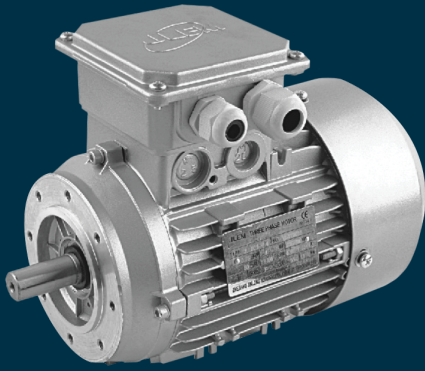
SAWMILLS

METAL RECYCLING

TRANSIT & RAILROAD

WATER & WASTEWATER

DIMENSIONS & MOUNTING



# EISA High Efficient Motors TEFC Aluminum

*C-Face / General Purpose Motors*

## FEATURES

- + Class F Insulation
- + Design B
- + Rolled Steel Frame
- + Aluminum End Shields
- + Double Shielded Bearings
- + 40°C Ambient
- + High Efficient

## APPLICATIONS

- + General Purpose
- + Blowers
- + Compressors
- + Conveyors
- + Fans
- + Pumps
- + Reducers

HP	RPM	VOLTS	FRAME	MODEL		FL AMPS	FL EFF	WT
				FOOTED	FOOTLESS			
1/4	3260	208-230 / 460	48C	AE142T11	AE142T11	0.96-0.9 / 0.43	65%	17 lbs
	1570	208-230 / 460	48C	AE144T11	AE144T11	1.14-1 / 0.52	60%	18 lbs
	1020	208-230 / 460	56C	AE146T11	AE146T11	1.35-1.2 / 0.61	56%	23 lbs
1/3	3260	208-230 / 460	48C	AE132T11	AE132T11	1.26-1.1 / 0.57	68%	18 lbs
	1595	208-230 / 460	48C	AE134T11	AE134T11	1.44-1.3 / 0.65	65%	19 lbs
1/2	3285	208-230 / 460	48C	AE122T11	AE122T11	1.81-1.6 / 0.82	70%	19 lbs
	1595	208-230 / 460	56C	AE124T11	AE124T11	2.04-1.8 / 0.92	67%	26 lbs
	1060	208-230 / 460	56C	AE126T11	AE126T11	2.37-2.1 / 1.07	62%	24 lbs
3/4	3285	208-230 / 460	48C	AE342T11	AE342T11	2.55-2.3 / 1.15	73%	20 lbs
	1665	208-230 / 460	56C	AE344T11	AE344T11	2.86-2.6 / 1.29	71.1%	28 lbs
	1060	208-230 / 460	143C	AE346T11	AE346T11	3.26-3 / 1.48	65%	27 lbs
1	3405	208-230 / 460	56C	AE12T11	AE12T11	3.34-3 / 1.51	75.1%	26 lbs
	1665	208-230 / 460	143TC	AE14T11	AE14T11	3.75-3.4 / 1.69	73.1%	29 lbs
	1090	208-230 / 460	145TC	AE16T11	AE16T11	4.19-3.8 / 1.89	69%	29 lbs
	815	208-230 / 460	182TC	AE18T11	AE18T11	4.38-4 / 1.98	71%	57 lbs
1.5	3405	208-230 / 460	143TC	AE322T11	AE322T11	4.72-4.3 / 2.13	77%	28 lbs
	1665	208-230 / 460	145TC	AE324T11	AE324T11	5.2-4.7 / 2.35	76.3%	30 lbs
	1090	208-230 / 460	182TC	AE326T11	AE326T11	5.8-5.2 / 2.62	72.1%	57 lbs
	815	208-230 / 460	184TC	AE328T11	AE328T11	6.06-5.5 / 2.74	73%	62 lbs
2	3405	208-230 / 460	145TC	AE22T11	AE22T11	6.27-5.7 / 2.84	79%	30 lbs
	1665	208-230 / 460	145TC	AE24T11	AE24T11	6.71-6.1 / 3.03	78.6%	31 lbs
	1100	208-230 / 460	184TC	AE26T11	AE26T11	7.29-6.6 / 3.3	76.1%	64 lbs
	825	208-230 / 460	213TC	AE28T11	AE28T11	8.05-7.3 / 3.64	75%	84 lbs
3	3405	208-230 / 460	145TC	AE32T11	AE32T11	8.86-8 / 4.01	81.1%	33 lbs
	1690	208-230 / 460	182TC	AE34T11	AE34T11	9.28-8.4 / 4.2	81.2%	62 lbs
	1150	208-230 / 460	213TC	AE36T11	AE36T11	9.91-9 / 4.48	81.1%	84 lbs
	845	208-230 / 460	215TC	AE38T11	AE38T11	11-10 / 4.99	78%	93 lbs
5	3455	208-230 / 460	184TC	AE52T11	AE52T11	13.8-13 / 6.25	84.4%	62 lbs
	1720	208-230 / 460	184TC	AE54T11	AE54T11	14.9-13 / 6.72	84.3%	66 lbs
	1150	208-230 / 460	215TC	AE56T11	AE56T11	16.5-15 / 7.44	82.1%	97 lbs
	860	208-230 / 460	254TC	AE58T11	AE58T11	17.4-16 / 7.85	81%	152 lbs

*Dimensions & Mounting  
Page 181*

(Continued)

HP	RPM	VOLTS	FRAME	MODEL		FL AMPS	FL EFF	WT
				FOOTED	FOOTLESS			
7.5	3480	208-230 / 460	184TC	AE72T11	AE72T11	20.2-18 / 9.13	85.9%	86 lbs
	1725	208-230 / 460	213TC	AE74T11	AE74T11	21.4-19 / 9.69	85.8%	93 lbs
	1150	208-230 / 460	254TC	AE76T11	AE76T11	23.6-21 / 10.7	84.1%	150 lbs
	860	208-230 / 460	256TC	AE78T11	AE78T11	24.9-22 / 11.2	83%	192 lbs
10	3480	208-230 / 460	215TC	AE102T11	AE102T11	27.1-25 / 12.3	87.2%	110 lbs
	1725	208-230 / 460	215TC	AE104T11	AE104T11	28.5-26 / 12.9	87.1%	107 lbs
	1150	208-230 / 460	256TC	AE106T11	AE106T11	31.4-28 / 14.2	86.1%	161 lbs
15	3515	208-230 / 460	254TC	AE152T11	AE152T11	38.8-35 / 17.5	88.5%	150 lbs
	1750	208-230 / 460	254TC	AE154T11	AE154T11	41.1-37 / 18.6	88.5%	163 lbs
20	3515	208-230 / 460	256TC	AE202T11	AE202T11	52.3-47 / 23.6	89.5%	181 lbs
	1750	208-230 / 460	256TC	AE204T11	AE204T11	54.7-49 / 24.7	89.5%	191 lbs
25	3515	208-230 / 460	284TC	AE252T11	AE252T11	63.3-57 / 28.6	90.2%	225 lbs
	1760	208-230 / 460	284TC	AE254T11	AE254T11	66.3-60 / 30	90.1%	223 lbs
30	3525	208-230 / 460	286TC	AE302T11	AE302T11	74.8-68 / 33.8	90.7%	265 lbs
	1760	208-230 / 460	286TC	AE304T11	AE304T11	78.4-71 / 35.4	90.6%	247 lbs

CONTROLS

ENERGY STORAGE

MOTORS

PUMPS

VALVES

COMPRESSORS

PNEUMATICS

SAWMILLS

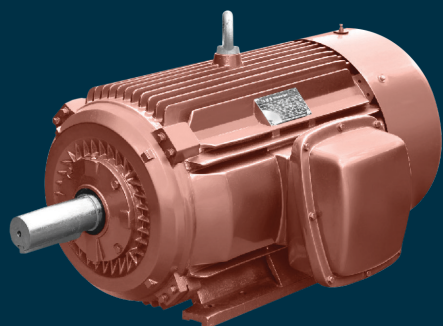
METAL RECYCLING

TRANSIT & RAILROAD

WATER & WASTEWATER

DIMENSIONS & MOUNTING





# Premium Efficient Motors

## TEFC Cast Iron

*Foot Mount / General Purpose Motors*

### FEATURES

- + Premium Efficient
- + Service Factor 1.15
- + Design B
- + Class F Insulation
- + 40°C Ambient Temperature (Higher Derating Factors Available)
- + Cast Iron Frame & End Shield

### APPLICATIONS

- + General Purpose in Damp & Dusty/Dirty Environments
- + Process Industries
- + Blowers
- + Compressors
- + Conveyors
- + Fans
- + Pumps

HP	RPM	VOLTS	FRAME	MODEL	FL AMPS	FL EFF	WT
1	1800	208-230 / 460	143T	PE14T01	1.43	85.5%	54 lbs
	1200	208-230 / 460	145T	PE16T01	1.73	82.5%	56 lbs
1.5	3600	208-230 / 460	143T	PE322T01	1.98	84%	45 lbs
	1800	208-230 / 460	145T	PE324T01	8	86.5%	56 lbs
2	1200	208-230 / 460	182T	PE326T01	2.39	87.5%	79 lbs
	3600	208-230 / 460	145T	PE22T01	2.65	85.5%	52 lbs
2	1800	208-230 / 460	145T	PE24T01	2.63	86.5%	58 lbs
	1200	208-230 / 460	184T	PE26T01	3.23	88.5%	97 lbs
3	3600	208-230 / 460	182T	PE32T01	3.68	87.5%	99 lbs
	1800	208-230 / 460	182T	PE34T01	3.9	89.5%	99 lbs
3	1200	208-230 / 460	213T	PE36T01	4.41	89.5%	134 lbs
	3600	208-230 / 460	184T	PE52T01	5.76	89.5%	114 lbs
5	1800	208-230 / 460	184T	PE54T01	6.4	89.5%	108 lbs
	1200	208-230 / 460	215T	PE56T01	6.83	89.5%	175 lbs
7.5	3600	208-230 / 460	213T	PE72T01	8.63	91%	134 lbs
	1800	208-230 / 460	213T	PE74T01	9.29	91.7%	165 lbs
7.5	1200	208-230 / 460	254T	PE76T01	9.73	91%	282 lbs
	3600	208-230 / 460	215T	PE102T01	11.5	91.7%	173 lbs
10	1800	208-230 / 460	215T	PE104T01	12.6	91.7%	172 lbs
	1200	208-230 / 460	256T	PE106T01	13.3	91%	316 lbs
15	3600	208-230 / 460	254T	PE152T01	16.9	91.7%	280 lbs
	1800	208-230 / 460	254T	PE154T01	18	92.4%	291 lbs
15	1200	208-230 / 460	284T	PE156T01	17.3	91.7%	360 lbs
	3600	208-230 / 460	256T	PE202T01	22.9	92.4%	313 lbs
20	1800	208-230 / 460	256T	PE204T01	24.4	93%	324 lbs
	1200	208-230 / 460	286T	PE206T01	24.1	91.7%	503 lbs
25	3600	208-230 / 460	284TS	PE252T01	28.4	93%	353 lbs
	1800	208-230 / 460	284T	PE254T01	29.5	93.6%	481 lbs
25	1200	208-230 / 460	324T	PE256T01	30.5	93%	605 lbs
	3600	208-230 / 460	256TS	PE302T01	33.4	93%	428 lbs
30	1800	208-230 / 460	286T	PE304T01	35.1	93.6%	525 lbs
	1200	208-230 / 460	326T	PE306T01	35.8	93%	673 lbs

*Dimensions & Mounting*  
Page 174

(Continued)

HP	RPM	VOLTS	FRAME	MODEL	FL AMPS	FL EFF	WT
40	3600	208-230 / 460	324TS	PE402T01	45.8	93.6%	561 lbs
	1800	208-230 / 460	324T	PE404T01	48.3	94.1%	640 lbs
	1200	208-230 / 460	364T	PE406T01	47.1	94.1%	1076 lbs
50	3600	208-230 / 460	326TS	PE502T01	55.5	94.1%	607 lbs
	1800	208-230 / 460	326T	PE504T01	60.6	94.5%	662 lbs
	1200	208-230 / 460	365T	PE506T01	58	94.1%	1127 lbs
60	3600	208-230 / 460	364TS	PE602T01	68.3	94.1%	992 lbs
	1800	208-230 / 460	364T	PE604T01	68.4	95%	1036 lbs
	1200	208-230 / 460	404T	PE606T01	70.4	94.5%	1346 lbs
75	3600	208-230 / 460	365TS	PE752T01	82.6	95%	1025 lbs
	1800	208-230 / 460	365T	PE754T01	82.3	95.4%	1047 lbs
	1200	208-230 / 460	405T	PE756T01	87	94.5%	1478 lbs
100	3600	208-230 / 460	405TS	PE1002T01	111	95%	1361 lbs
	1800	208-230 / 460	405T	PE1004T01	112	95.4%	1302 lbs
	1200	208-230 / 460	444T	PE1006T01	121	95%	2006 lbs
125	3600	208-230 / 460	444TS	PE1252T01	133	95%	1794 lbs
	1800	208-230 / 460	444T	PE1254T01	138	95.4%	1841 lbs
	1200	208-230 / 460	445T	PE1256T01	145	95%	2082 lbs
150	3600	460	445TS	PE1502T01	161	95.4%	1865 lbs
	1800	460	445T	PE1504T01	170	95.8%	1940 lbs
	1200	460	447T	PE1506T01	174	95.8%	2738 lbs
200	3600	460	447TS	PE2002T01	221	95.8%	2072 lbs
	1800	460	447T	PE2004T01	230	96.2%	2216 lbs
	1200	460	449T	PE2006T01	223	95.8%	2506 lbs
250	3600	460	449TS	PE2502T01	269	95.8%	2364 lbs
	1800	460	449T	PE2504T01	268	96.2%	2486 lbs
	1200	460	449T	PE2506T01	289	95.8%	2667 lbs
300	3600	460	449TS	PE3002T01	324	95.8%	2454 lbs
	1800	460	449T	PE3004T01	326	96.2%	2666 lbs
350	3600	460	507TS	PE3502T01	378	95.8%	4050 lbs
	1800	460	5011LY	PE3504T01	394	96.2%	5650 lbs
400	3600	460	508TS	PE4002T01	442	95.8%	4207 lbs
	1800	460	5011LY	PE4004T01	455	96.2%	4674 lbs
	1200	460	5011LY	PE4006T01	468	95.8%	5556 lbs
450	1200	460	5011LY	PE4506T01	512	95.8%	5650 lbs
500	3600	460	509TS	PE5002T01	527	95.8%	4724 lbs
	1800	460	5011LY	PE5004T01	555	96.2%	5000 lbs

CONTROLS

ENERGY STORAGE

MOTORS

PUMPS

VALVES

COMPRESSORS

PNEUMATICS

SAWMILLS

METAL RECYCLING

TRANSIT & RAILROAD

WATER & WASTEWATER

DIMENSIONS & MOUNTING



# Premium Efficient Motors

## TEFC Cast Iron

*C-Face / General Purpose Motors*

### FEATURES

- + Premium Efficient
- + Service Factor 1.15
- + Design B
- + Class F Insulation
- + 40°C Ambient Temperature
- + Cast Iron Frame & End Shield

### APPLICATIONS

- + General Purpose in Damp & Dusty/Dirty Environments
- + Process Industries
- + Blowers
- + Compressors
- + Conveyors
- + Fans
- + Pumps

HP	RPM	VOLTS	FRAME	MODEL		FL AMPS	FL EFF	WT
				FOOTED	FOOTLESS			
1	1800	208-230 / 460	143TC	PE14T11	PE14T21	1.43	85.5%	54 lbs
	1200	208-230 / 460	145TC	PE16T11	PE16T21	1.73	82.5%	56 lbs
1.5	3600	208-230 / 460	143TC	PE322T11	PE322T21	1.98	84%	45 lbs
	1800	208-230 / 460	145TC	PE324T11	PE324T21	2	86.5%	56 lbs
2	1200	208-230 / 460	182TC	PE326T11	PE326T21	2.39	87.5%	79 lbs
	3600	208-230 / 460	145TC	PE22T11	PE22T21	2.65	85.5%	52 lbs
2	1800	208-230 / 460	145TC	PE24T11	PE24T21	2.63	86.5%	58 lbs
	1200	208-230 / 460	184TC	PE26T11	PE26T21	3.23	88.5%	97 lbs
3	3600	208-230 / 460	182TC	PE32T11	PE32T21	3.68	87.5%	99 lbs
	1800	208-230 / 460	182TC	PE34T11	PE34T21	3.9	89.5%	99 lbs
	1200	208-230 / 460	213TC	PE36T11	PE36T21	4.41	89.5%	134 lbs
5	3600	208-230 / 460	184TC	PE52T11	PE52T21	5.76	89.5%	114 lbs
	1800	208-230 / 460	184TC	PE54T11	PE54T21	6.4	89.5%	108 lbs
7.5	1200	208-230 / 460	215TC	PE56T11	PE56T21	6.83	89.5%	175 lbs
	3600	208-230 / 460	213TC	PE72T11	PE72T21	8.63	91%	134 lbs
7.5	1800	208-230 / 460	213TC	PE74T11	PE74T21	9.29	91.7%	165 lbs
	1200	208-230 / 460	254TC	PE76T11	PE76T21	9.73	91%	282 lbs
10	3600	208-230 / 460	215TC	PE102T11	PE102T21	11.5	91.7%	173 lbs
	1800	208-230 / 460	215TC	PE104T11	PE104T21	12.6	91.7%	172 lbs
	1200	208-230 / 460	256TC	PE106T11	PE106T21	13.3	91%	316 lbs
15	3600	208-230 / 460	254TC	PE152T11	PE152T21	16.9	91.7%	280 lbs
	1800	208-230 / 460	254TC	PE154T11	PE154T21	18	92.4%	291 lbs
15	1200	208-230 / 460	284TC	PE156T11	PE156T21	17.3	91.7%	360 lbs
	3600	208-230 / 460	256TC	PE202T11	PE202T21	22.9	92.4%	313 lbs
20	1800	208-230 / 460	256TC	PE204T11	PE204T21	24.4	93%	324 lbs
	1200	208-230 / 460	286TC	PE206T11	PE206T21	24.1	91.7%	503 lbs
25	3600	208-230 / 460	284TSC	PE252T11	PE252T21	28.4	93%	353 lbs
	1800	208-230 / 460	284TC	PE254T11	PE254T21	29.5	93.6%	481 lbs
30	3600	208-230 / 460	286TSC	PE302T11	PE302T21	33.4	93%	428 lbs
	1800	208-230 / 460	286TC	PE304T11	PE304T21	35.1	93.6%	525 lbs

*Dimensions & Mounting*

*Page 176*

(Continued)

HP	RPM	VOLTS	FRAME	MODEL		FL AMPS	FL EFF	WT
				FOOTED	FOOTLESS			
40	3600	208-230 / 460	324TSC	PE402T11	-	45.8	93.6%	561 lbs
	1800	208-230 / 460	324TC	PE404T11	-	48.3	94.1%	640 lbs
50	3600	208-230 / 460	326TSC	PE502T11	-	55.5	94.1%	607 lbs
	1800	208-230 / 460	326TC	PE504T11	-	60.6	94.5%	662 lbs
60	3600	208-230 / 460	364TSC	PE602T11	-	68.3	94.1%	992 lbs
	1800	208-230 / 460	364TC	PE604T11	-	68.4	95%	1036 lbs
75	3600	208-230 / 460	365TSC	PE752T11	-	82.6	95%	1025 lbs
	1800	208-230 / 460	365TC	PE754T11	-	82.3	95.4%	1047 lbs
100	3600	208-230 / 460	405TSC	PE1002T11	-	111	95%	1361 lbs
	1800	208-230 / 460	405TC	PE1004T11	-	112	95.4%	1302 lbs
125	3600	208-230 / 460	444TSC	PE1252T11	-	133	95%	1794 lbs
	1800	208-230 / 460	444TC	PE1254T11	-	138	95.4%	1841 lbs
150	3600	460	445TSC	PE1502T11	-	161	95.4%	1865 lbs
	1800	460	445TC	PE1504T11	-	170	95.8%	1940 lbs
200	3600	460	447TSC	PE2002T11	-	221	95.8%	2072 lbs
	1800	460	447TC	PE2004T11	-	230	96.2%	2216 lbs

CONTROLS

ENERGY STORAGE

MOTORS

PUMPS

VALVES

COMPRESSORS

PNEUMATICS

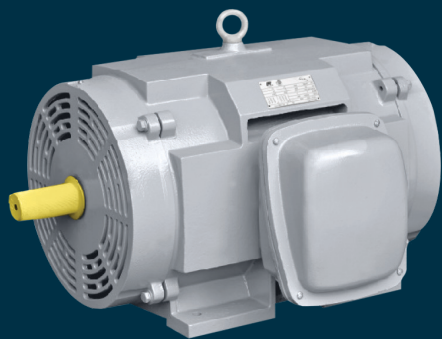
SAWMILLS

METAL RECYCLING

TRANSIT & RAILROAD

WATER & WASTEWATER

DIMENSIONS & MOUNTING



# Premium Efficient Motors ODP Cast Iron

*Foot Mount / General Purpose Motors*

## FEATURES

- + Premium Efficient
- + Service Factor 1.15
- + Design B
- + Class F Insulation
- + 40°C Ambient Temperature
- + Cast Iron Frame & End Shield

## APPLICATIONS

- + General Purpose in Damp & Dusty/Dirty Environments
- + Compressors
- + Fans
- + Material Handling
- + Pumps

HP	RPM	VOLTS	FRAME	MODEL	FL AMPS	FL EFF	WT
15	1800	208-230 / 460	254T	PE154D01	18.6	93%	234 lbs
	1200	208-230 / 460	284T	PE156D01	18.5	92.4%	330 lbs
20	3600	208-230 / 460	254T	PE202D01	24.6	91%	205 lbs
	1800	208-230 / 460	256T	PE204D01	25.3	93%	291 lbs
	1200	208-230 / 460	286T	PE206D01	26	92.4%	372 lbs
	3600	208-230 / 460	256T	PE252D01	28.8	93%	269 lbs
25	1800	208-230 / 460	284TS	PE254D01	29.2	94.1%	382 lbs
		208-230 / 460	284T	PE254D02	29.2	94.1%	382 lbs
	1200	208-230 / 460	324T	PE256D01	31	93.6%	478 lbs
	3600	208-230 / 460	284TS	PE302D01	31.1	93.6%	373 lbs
30	1800	208-230 / 460	286TS	PE304D01	35.4	94.1%	459 lbs
		208-230 / 460	286T	PE304D02	35.4	94.1%	459 lbs
	1200	208-230 / 460	326T	PE306D01	37	93.6%	474 lbs
40	3600	208-230 / 460	286TS	PE402D01	37.1	93.6%	457 lbs
	1800	208-230 / 460	324TS	PE404D01	45.7	94.5%	574 lbs
		208-230 / 460	324T	PE404D02	45.7	94.5%	574 lbs
	1200	208-230 / 460	364T	PE406D01	50	94.1%	827 lbs
50	3600	208-230 / 460	324TS	PE502D01	50.2	94.1%	541 lbs
	1800	208-230 / 460	326TS	PE504D01	57.3	94.5%	618 lbs
		208-230 / 460	326T	PE504D02	57.3	94.5%	618 lbs
	1200	208-230 / 460	365T	PE506D01	62	94.1%	867 lbs
60	3600	208-230 / 460	326TS	PE602D01	65	94.5%	627 lbs
	1800	208-230 / 460	364TS	PE604D01	68	95%	935 lbs
		208-230 / 460	364T	PE604D02	68	95%	935 lbs
	1200	208-230 / 460	404T	PE606D01	72	95%	1153 lbs
75	3600	208-230 / 460	364TS	PE752D01	81.5	94.5%	805 lbs
	1800	208-230 / 460	365TS	PE754D01	85.5	95%	935 lbs
		208-230 / 460	265T	PE754D02	85.5	95%	935 lbs
	1200	208-230 / 460	405T	PE756D01	88	95%	1114 lbs

*Dimensions & Mounting*

*Page 178*

(Continued)

HP	RPM	VOLTS	FRAME	MODEL	FL AMPS	FL EFF	WT
100	3600	208-230 / 460	365TS	PE1002D01	111	94.5%	935 lbs
	1800	208-230 / 460	404TS	PE1004D01	115	95.4%	1207 lbs
		208-230 / 460	404T	PE1004D02	115	95.4%	1207 lbs
	1200	208-230 / 460	444T	PE1006D01	123	95%	1472 lbs
125	3600	460	404TS	PE1252D01	132	95%	1401 lbs
	1800	460	405TS	PE1254D01	141	95.4%	1207 lbs
		460	405T	PE1254D02	141	95.4%	1207 lbs
	1200	460	445T	PE1256D01	146	95.8%	1573 lbs
150	3600	460	405TS	PE1502D01	159	94.5%	1141 lbs
	1800	460	444TS	PE1504D01	166	95.8%	1609 lbs
		460	444T	PE1504D02	166	95.8%	1609 lbs
	1200	460	445T	PE1506D01	176	95.8%	1789 lbs
200	3600	460	444TS	PE2002D01	220	95.4%	1713 lbs
	1800	460	445TS	PE2004D01	223	95.8%	1916 lbs
		460	445T	PE2004D02	223	95.8%	1916 lbs
	1200	460	447T	PE2006D01	234	95.8%	1837 lbs
250	1800	460	445T	PE2504D01	280	95.8%	1992 lbs
300	1800	460	445T	PE3004D01	335	95.8%	2010 lbs

CONTROLS

ENERGY STORAGE

MOTORS

PUMPS

VALVES

COMPRESSORS

PNEUMATICS

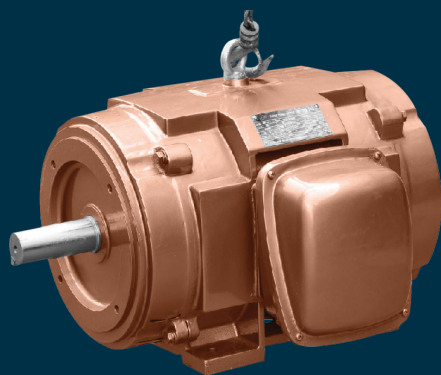
SAWMILLS

METAL RECYCLING

TRANSIT & RAILROAD

WATER & WASTEWATER

DIMENSIONS & MOUNTING



# Premium Efficient Motors ODP Cast Iron

*C-Face / General Purpose Motors*

## FEATURES

- + Premium Efficient
- + Service Factor 1.15
- + Design B
- + Class F Insulation
- + 40°C Ambient Temperature
- + Cast Iron Frame & End Shield

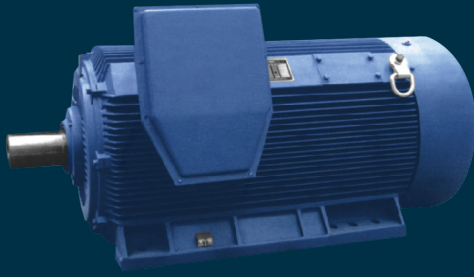
## APPLICATIONS

- + Compressors
- + Fans
- + Material Handling
- + Pumps
- + General Purpose

HP	RPM	VOLTS	FRAME	MODEL	FL AMPS	FL EFF	WT
15	1800	208-230 / 460	254TC	PE154D11	18.6	93%	234 lbs
	1200	208-230 / 460	284TC	PE156D11	18.5	92.4%	330 lbs
20	3600	208-230 / 460	254TC	PE202D11	24.6	91%	205 lbs
	1800	208-230 / 460	256TC	PE204D11	25.3	93%	291 lbs
20	1200	208-230 / 460	286TC	PE206D11	26	92.4%	372 lbs
	3600	208-230 / 460	256TC	PE252D11	28.8	93%	269 lbs
25	1800	208-230 / 460	284TC	PE254D12	29.2	94.1%	382 lbs
	1200	208-230 / 460	324TC	PE256D11	31	93.6%	478 lbs
30	3600	208-230 / 460	284TSC	PE302D11	31.1	93.6%	373 lbs
	1800	208-230 / 460	286TC	PE304D12	35.4	94.1%	459 lbs
30	1200	208-230 / 460	326TC	PE306D11	37	93.6%	474 lbs
	3600	208-230 / 460	286TSC	PE402D11	37.1	93.6%	457 lbs
40	1800	208-230 / 460	324TC	PE404D12	45.7	94.5%	574 lbs
	1200	208-230 / 460	364TC	PE406D11	50	94.1%	827 lbs
50	3600	208-230 / 460	324TSC	PE502D11	50.2	94.1%	541 lbs
	1800	208-230 / 460	326TC	PE504D12	57.3	94.5%	618 lbs
50	1200	208-230 / 460	365TC	PE506D11	62	94.1%	867 lbs
	3600	208-230 / 460	326TSC	PE602D11	65	94.5%	627 lbs
60	1800	208-230 / 460	364TC	PE604D12	68	95%	935 lbs
	1200	208-230 / 460	404TC	PE606D11	72	95%	1153 lbs
75	3600	208-230 / 460	364TSC	PE752D11	81.5	94.5%	805 lbs
	1800	208-230 / 460	265TC	PE754D12	85.5	95%	935 lbs
75	1200	208-230 / 460	405TC	PE756D11	88	95%	1114 lbs
	3600	208-230 / 460	365TSC	PE1002D11	111	94.5%	935 lbs
100	1800	208-230 / 460	404TC	PE1004D12	115	95.4%	1207 lbs

*Dimensions & Mounting*

*Page 179*



# Medium Voltage Motors TEFC Cast Iron/Steel

*General Purpose Motors*

## FEATURES

- + Low Noise, 85dBA
- + Service Factor 1.15
- + Design B
- + Class F Insulation
- + Class B Temperature Rise
- + 40°C Ambient Temperature
- + Cast Iron or Steel Frame
- + Copper Bar Rotor
- + Large Size Terminal Box

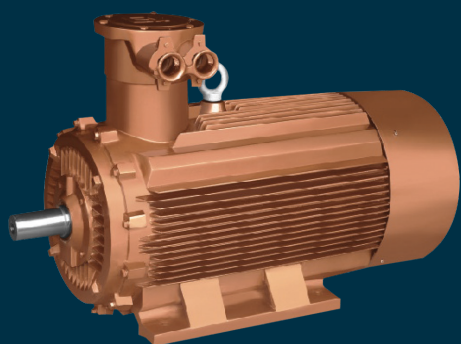
## APPLICATIONS

- + Processing Applications
- + Chemical Plants
- + Waste Management Facilities
- + Severe Conditions
- + Tropical Climates

HP	RPM	VOLTS	FRAME	MODEL	FL AMPS	FL EFF	WT
350	1200	2300 / 4160	5009	MV35061	49.4	94%	4882 lbs
	1800	2300 / 4160	5007	MV35041	44.4	93.8%	4140 lbs
	3600	2300 / 4160	5007	MV35021	42.4	94%	4161 lbs
	900	2300 / 4160	5811	MV35081	50.1	94%	6787 lbs
400	1200	2300 / 4160	5010	MV40061	54.8	94.5%	5180 lbs
	1800	2300 / 4160	5008	MV40041	50.6	94%	4367 lbs
	3600	2300 / 4160	5009	MV40021	48.3	94.3%	4882 lbs
	900	2300 / 4160	5811	MV40081	57.2	94.1%	6787 lbs
450	1200	2300 / 4160	5011	MV45061	62.4	94.5%	5345 lbs
	1800	2300 / 4160	5009	MV45041	56.8	94.3%	4882 lbs
	3600	2300 / 4160	5011	MV45021	53.7	94.3%	5273 lbs
	900	2300 / 4160	5812	MV45081	63.4	94.2%	7261 lbs
500	1200	2300 / 4160	5811	MV50061	67.6	94.8%	6787 lbs
	1800	2300 / 4160	5011	MV50041	62	94.9%	5345 lbs
	3600	2300 / 4160	5811	MV50021	60.4	95.2%	6530 lbs
600	1200	2300 / 4160	5812	MV60061	80.7	95.3%	7261 lbs
	1800	2300 / 4160	5811	MV60041	75.6	95.5%	6787 lbs
	3600	2300 / 4160	5812	MV60021	72.7	95.8%	7014 lbs
700	1200	2300 / 4160	6809	MV70061	94.2	95.5%	8652 lbs
	1800	2300 / 4160	5812	MV70041	87.7	95.8%	7261 lbs
	3600	2300 / 4160	6809	MV70021	84.1	95.8%	8174 lbs
800	1200	2300 / 4160	6810	MV80061	106.3	95.7%	9084 lbs
	1800	2300 / 4160	6809	MV80041	100.8	95.7%	8404 lbs
	3600	2300 / 4160	6809	MV80021	97.1	95.8%	8174 lbs
900	1800	2300 / 4160	6810	MV90041	112.2	95.9%	8837 lbs
1000	1800	2300 / 4160	6810	MV100041	124.6	96%	8837 lbs

*Dimensions & Mounting*  
Page 182





# Explosion Proof Motors

## TEFC

*Special Purpose Motors*

### FEATURES

- + High Efficient
- + Class I, Group C & D  
Class II, Group E, F, & G
- + Service Factor 1.15
- + Design B
- + Class F Insulation
- + 40°C Ambient Temperature
- + TEXP Enclosure

### APPLICATIONS

- + Hazardous Locations
- + Compressors
- + Conveyors
- + Fans
- + Material Handling
- + Pumps

HP	RPM	VOLTS	FRAME	MODEL	FL AMPS	FL EFF	WT
1	1800	208-230 / 460	143T	EX1401	1.6	85.5%	72 lbs
1.5	1800	208-230 / 460	145T	EX32401	2.2	86.5%	73 lbs
	1200	208-230 / 460	182T	EX32601	2.2	87.5%	116 lbs
2	3600	208-230 / 460	145T	EX2201	2.6	85.5%	77 lbs
	1800	208-230 / 460	145T	EX2401	2.8	86.5%	75 lbs
	1200	208-230 / 460	184T	EX2601	2.9	88.5%	127 lbs
3	3600	208-230 / 460	182T	EX3201	3.7	86.5%	118 lbs
	1800	208-230 / 460	182T	EX3401	3.8	89.5%	124 lbs
	1200	208-230 / 460	213T	EX3601	4.1	89.5%	225 lbs
5	3600	208-230 / 460	184T	EX5201	5.8	88.5%	131 lbs
	1800	208-230 / 460	184T	EX5401	6.2	89.5%	134 lbs
7.5	1200	208-230 / 460	215T	EX5601	6.6	89.5%	287 lbs
	3600	208-230 / 460	213T	EX7201	8.6	89.5%	236 lbs
	1800	208-230 / 460	213T	EX7401	9.2	91.7%	244 lbs
10	1200	208-230 / 460	254T	EX7601	9.5	91%	363 lbs
	3600	208-230 / 460	215T	EX10201	11.5	90.2%	259 lbs
	1800	208-230 / 460	215T	EX10401	12.4	91.7%	250 lbs
15	1200	208-230 / 460	256T	EX10601	12.5	91%	379 lbs
	3600	208-230 / 460	254T	EX15201	16.7	91%	396 lbs
	1800	208-230 / 460	254T	EX15401	16.9	92.4%	404 lbs
20	1200	208-230 / 460	284T	EX15601	18	91.7%	482 lbs
	3600	208-230 / 460	256T	EX20201	22.7	91%	441 lbs
	1800	208-230 / 460	256T	EX20401	23	93%	448 lbs
25	1200	208-230 / 460	286T	EX20601	24.4	91.7%	494 lbs
	3600	208-230 / 460	284TS	EX25201	27.7	91.7%	535 lbs
	1800	208-230 / 460	284T	EX25401	27.9	93.6%	531 lbs
30	1200	208-230 / 460	324T	EX25601	30.2	93%	648 lbs
	3600	208-230 / 460	286TS	EX30201	32.8	91.7%	553 lbs
	1800	208-230 / 460	286T	EX30401	33	93.6%	538 lbs
	1200	208-230 / 460	326T	EX30601	35.4	93%	690 lbs

(Continued)

HP	RPM	VOLTS	FRAME	MODEL	FL AMPS	FL EFF	WT
40	3600	208-230 / 460	324TS	EX40201	44.9	92.4%	669 lbs
	1800	208-230 / 460	324T	EX40401	45.5	94.1%	690 lbs
	1200	208-230 / 460	364T	EX40601	47.1	94.1%	937 lbs
50	3600	208-230 / 460	326TS	EX50201	56	93%	715 lbs
	1800	208-230 / 460	326T	EX50401	57	94.5%	736 lbs
	1200	208-230 / 460	365T	EX50601	59	94.1%	978 lbs
60	3600	208-230 / 460	364TS	EX60201	67.5	93.6%	896 lbs
	1800	208-230 / 460	364T	EX60401	68.5	95%	947 lbs
	1200	208-230 / 460	404T	EX60601	69.5	94.5%	1282 lbs
75	3600	208-230 / 460	365TS	EX75201	82.5	93.6%	952 lbs
	1800	208-230 / 460	365T	EX75401	83.5	95.4%	1014 lbs
	1200	208-230 / 460	405T	EX75601	84.5	94.5%	1359 lbs
100	3600	208-230 / 460	405TS	EX100201	112	94.1%	1344 lbs
	1800	208-230 / 460	405T	EX100401	113	95.4%	1390 lbs
	1200	460	444 / 5T	EX100601	115	95%	1610 lbs
125	3600	460	444 / 5TS	EX125201	134	95%	1673 lbs
	1800	460	444 / 5T	EX125401	134	95.4%	1601 lbs
	1200	460	444 / 5T	EX125601	138	95%	1792 lbs
150	3600	460	444 / 5TS	EX150201	164	95%	1771 lbs
	1800	460	444 / 5T	EX150401	163	95.8%	1792 lbs
	1200	460	447 / 9T	EX150601	167	95.8%	2008 lbs
200	3600	460	444 / 5TS	EX200201	223	95.4%	1874 lbs
	1800	460	455 / 7 / 9T	EX200401	223	96.2%	2049 lbs
	1200	460	477 / 9T	EX200601	233	95.8%	2662 lbs

CONTROLS

ENERGY STORAGE

MOTORS

PUMPS

VALVES

COMPRESSORS

PNEUMATICS

SAWMILLS

METAL RECYCLING

RAILROAD & TRANSIT

WATER & WASTEWATER

DIMENSIONS & MOUNTING



# Stainless Steel Motors TEFC

*C-Face / Special Purpose Motors*

## FEATURES

- + Service Factor 1.15
- + Design B
- + Class F Insulation
- + Lip Seals
- + Four Condensation Drains in each End Plate
- + 300 Series Stainless Steel Frame, End Plates, Shaft, Base, & Conduit Box

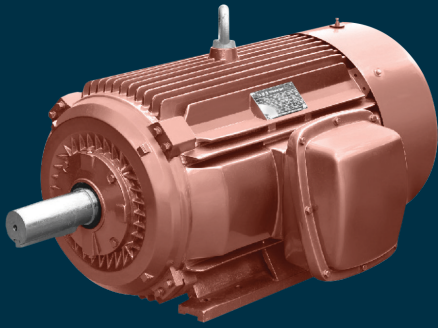
## APPLICATIONS

- + Corrosive Environments
- + Food Processing
- + Outdoors
- + Packaging

HP	RPM	VOLTS	FRAME	MODEL		FL AMPS	FL EFF	WT
				FOOTED	FOOTLESS			
1/3	3600	208-230 / 460	56C	SS13401	SS13411	0.6	79.8%	41 lbs
	1800	208-230 / 460	56C	SS12201	SS12211	0.84	78.3%	42 lbs
1/2	3600	208-230 / 460	56C	SS12401	SS12411	0.87	81.2%	48 lbs
	1200	208-230 / 460	56C	SS12601	SS12611	0.91	79.1%	63 lbs
3/4	3600	208-230 / 460	56C	SS34201	SS34211	1.17	81.9%	47 lbs
	1800	208-230 / 460	56C	SS34401	SS34411	1.25	81.3%	53 lbs
	1200	208-230 / 460	56C	SS34601	SS34611	1.29	82.9%	68 lbs
1	1800	208-230 / 460	56C	SS1201	SS1211	1.48	83.3%	58 lbs
		208-230 / 460	56C	SS1401	SS1411	1.58	82.3%	60 lbs
		208-230 / 460	56C	SS1402	SS1412	1.5	82.3%	60 lbs
		208-230 / 460	143TC	SS1403	SS1413	1.5	82.5%	75 lbs
		208-230 / 460	143TC	SS1404	SS1414	1.5	82.5%	75 lbs
1.5	3600	208-230 / 460	56C	SS32201	SS32211	2.05	82.3%	64 lbs
		208-230 / 460	143TC	SS32202	SS32212	2	82.5%	72 lbs
	1800	208-230 / 460	56C	SS32401	SS32411	2.01	82%	65 lbs
		208-230 / 460	145TC	SS32402	SS32412	2.2	84%	70 lbs
2	3600	208-230 / 460	56C	SS2201	SS2211	2.62	83%	73 lbs
		208-230 / 460	145TC	SS2202	SS2212	2.7	84%	82 lbs
	1800	208-230 / 460	56C	SS2401	SS2411	2.69	85%	78 lbs
		208-230 / 460	145TC	SS2402	SS2412	2.8	84%	80 lbs
3	3600	208-230 / 460	145TC	SS3201	SS3211	3.8	84%	90 lbs
		208-230 / 460	182TC	SS3202	SS3212	3.8	85.5%	95 lbs
	1800	208-230 / 460	182TC	SS3401	SS3411	3.9	87.5%	102 lbs
5	3600	208-230 / 460	184TC	SS5201	SS5211	6.1	87.5%	116 lbs
	1800	208-230 / 460	184TC	SS5401	SS5411	6.5	87.5%	130 lbs
7.5	3600	208-230 / 460	213TC	SS7201	SS7211	8.9	88.5%	175 lbs
	1800	208-230 / 460	213TC	SS7401	SS7411	9.4	89.5%	190 lbs
10	3600	208-230 / 460	215TC	SS10201	SS10211	11.8	89.5%	202 lbs
	1800	208-230 / 460	215TC	SS10401	SS10411	12.5	90.2%	207 lbs

*Dimensions & Mounting*

*Page 186*



# Crusher Duty Motors ODP

Foot Mount / Special Purpose Motors

## FEATURES

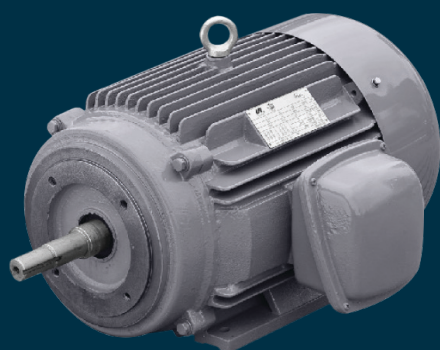
- + High Efficient
- + Service Factor 1.15
- + Design C High Torque
- + Class F Insulation
- + Drive End Roller Bearing
- + Not Suitable for Direct Coupled Drive

## APPLICATIONS

- + Belt Driven Rock Crushers
- + Pellet Mills
- + Severe Duty Services
- + High Starting Torque

HP	RPM	VOLTS	FRAME	MODEL	FL AMPS	FL EFF	WT
100	1800	208-230 / 460	405T	CU10041	115	94.5%	1184 lbs
	1200	208-230 / 460	444T	CU10061	121	94.1%	1061 lbs
125	1800	208-230 / 460	444T	CU12541	144	94.5%	1344 lbs
	1200	208-230 / 460	445T	CU12561	148	94.1%	1750 lbs
150	1800	208-230 / 460	445T	CU15041	166	95%	1637 lbs
	1200	208-230 / 460	445 / 7T	CU15061	176	95%	1851 lbs
200	1800	208-230 / 460	445 / 7T	CU20041	230	95.2%	2750 lbs
	1200	460	449T	CU20061	241	95%	2583 lbs
250	1800	460	449T	CU25041	282	95%	2583 lbs
		460	505Z	CU25042	276	94.8%	2429 lbs
		460	505UZ	CU25043	276	94.8%	2429 lbs
	1200	460	449T	CU25061	300	95.4%	2832 lbs
		460	586 / 7	CU25062	289	94.5%	3806 lbs
		460	586 / 7UZ	CU25063	289	94.5%	3806 lbs
300	1800	460	449T	CU30041	334	95.7%	2809 lbs
		460	586 / 7	CU30042	323	95%	3897 lbs
		460	586 / 7UZ	CU30043	323	95%	2914 lbs
	1200	460	449T	CU30061	355	94.5%	2914 lbs
		460	586 / 7	CU30062	337	95.2%	4260 lbs
		460	586 / 7UZ	CU30063	337	95.2%	4260 lbs
350	1800	460	586 / 7	CU35041	378	95.8%	4078 lbs
		460	586 / 7UZ	CU35042	378	95.8%	4078 lbs
	1200	460	586 / 7	CU35061	390	95.1%	4269 lbs
		460	586 / 7UZ	CU35062	390	95.1%	4269 lbs
400	1800	460	586 / 7	CU40041	430	95.3%	4224 lbs
		460	586 / 7UZ	CU40042	430	95.3%	4224 lbs
	1200	460	586 / 7	CU40061	448	95%	4540 lbs
		460	586 / 7UZ	CU40062	448	95%	4540 lbs
450	1800	460	586 / 7	CU45041	478	96.1%	4635 lbs
	1200	460	586 / 7	CU45061	501	95.8%	4635 lbs
500	1800	460	586 / 7	CU50041	539	95.8%	4768 lbs
		460	586 / 7UZ	CU50042	539	95.8%	4768 lbs
	1200	460	586 / 7	CU50061	557	95%	4882 lbs
		460	586 / 7UZ	CU50062	557	95%	4882 lbs

Dimensions & Mounting  
Page 183



# Close-Coupled Pump Motors

## TEFC

*Definite Purpose Motors*

### FEATURES

- + Service Factor 1.15
- + Design B
- + Class F Insulation
- + 40°C Ambient Temperature
- + Oversized Ball Bearing with Locked Drive End

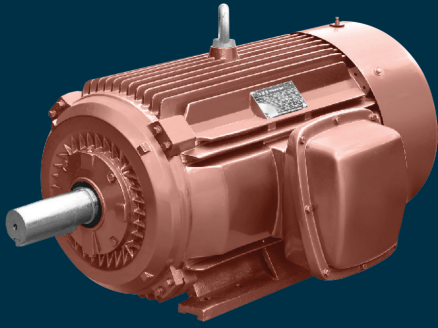
### APPLICATIONS

- + Circulating/Transferring Fluids

HP	RPM	VOLTS	JM		JP		FL AMPS	FL EFF	WT
			FRAME	MODEL	FRAME	MODEL			
1	1800	208-230 / 460	143JM	CCP14M1	143JP	CCP14P1	1.49	82.5%	47 lbs
	3600	208-230 / 460	143JM	CCP322M1	143JP	CCP322P1	1.99	82.5%	45 lbs
1.5	1800	208-230 / 460	145JM	CCP324M1	145JP	CCP324P1	2.05	84%	54 lbs
	3600	208-230 / 460	145JM	CCP22M1	145JP	CCP22P1	2.6	84%	47 lbs
2	1800	208-230 / 460	145JM	CCP24M1	145JP	CCP24P1	2.7	84%	56 lbs
	3600	208-230 / 460	145JM	CCP32M1	145JP	CCP32P1	3.8	84.5%	67 lbs
3	1800	208-230 / 460	182JM	CCP32M2	182JP	CCP32P2	3.59	85.5%	103 lbs
	3600	208-230 / 460	182JM	CCP34M1	182JP	CCP34P1	3.9	87.5%	97 lbs
5	3600	208-230 / 460	184JM	CCP52M1	184JP	CCP52P1	5.9	87.5%	114 lbs
	1800	208-230 / 460	184JM	CCP54M1	184JP	CCP54P1	6.48	87.5%	102 lbs
7.5	3600	208-230 / 460	184JM	CCP72M1	184JP	CCP72P1	8.66	82.5%	126 lbs
	1800	208-230 / 460	213JM	CCP72M2	213JP	CCP72P2	8.6	88.5%	150 lbs
10	1800	208-230 / 460	213JM	CCP74M1	213JP	CCP74P1	9.53	88.5%	150 lbs
	3600	208-230 / 460	215JM	CCP102M1	215JP	CCP102P1	11.7	89.5%	150 lbs
15	1800	208-230 / 460	215JM	CCP104M1	215JP	CCP104P1	12.8	89.5%	165 lbs
	3600	208-230 / 460	215JM	CCP152M1	215JP	CCP152P1	17	90.2%	168 lbs
20	1800	208-230 / 460	254JM	CCP152M2	254JP	CCP152P2	17	90.2%	280 lbs
	3600	208-230 / 460	254JM	CCP154M1	254JP	CCP154P1	17.9	90.2%	266 lbs
25	1800	208-230 / 460	256JM	CCP202M1	256JP	CCP202P1	24.4	91%	313 lbs
	3600	208-230 / 460	256JM	CCP204M1	256JP	CCP204P1	23.5	91%	470 lbs
30	1800	208-230 / 460	256JM	CCP252M1	256JP	CCP252P1	29	91%	277 lbs
	3600	208-230 / 460	284JM	CCP252M2	284JP	CCP252P2	29	91%	353 lbs
40	1800	208-230 / 460	284JM	CCP254M1	284JP	CCP254P1	29.6	92.4%	437 lbs
	3600	208-230 / 460	286JM	CCP302M1	286JP	CCP302P1	33.8	91%	404 lbs
50	1800	208-230 / 460	286JM	CCP304M1	286JP	CCP304P1	34.4	92.4%	481 lbs
	3600	208-230 / 460	324JM	CCP402M1	324JP	CCP402P1	46.1	91.7%	561 lbs
50	1800	208-230 / 460	324JM	CCP404M1	324JP	CCP404P1	47.6	93%	587 lbs
	3600	208-230 / 460	326JM	CCP502M1	326JP	CCP502P1	56.5	92.4%	594 lbs
50	1800	208-230 / 460	326JM	CCP504M1	326JP	CCP504P1	57.8	93.6%	640 lbs

*Dimensions & Mounting*

*Page 184*



# Oil Well Pump Motors TEFC

*Definite Purpose Motors*

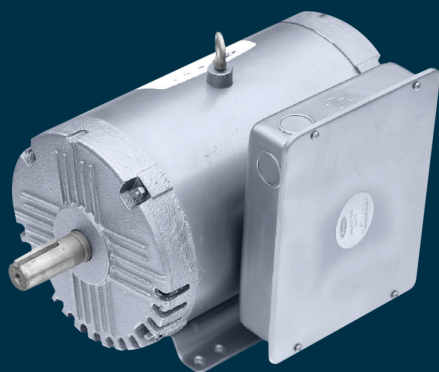
## FEATURES

- + Service Factor 1.15
- + Design D
- + Class F Insulation
- + 40°C Ambient Temperature
- + TEFC Enclosure

## APPLICATIONS

- + Beam Pumps
- + Sucker Rod Pumps
- + High Torque / High Slip

HP	RPM	VOLTS	FRAME	MODEL	FL AMPS	FL EFF	WT
3	1120	230 / 460 / 796	213T	OWP11	8.8 / 4.4 / 2.5	81.8%	157 lbs
5	1125	230 / 460 / 796	215T	OWP51	14.6 / 7.3 / 4.2	82.3%	177 lbs
7.5	1120	230 / 460 / 796	254T	OWP71	21.6 / 10.8 / 6.3	86.5%	298 lbs
10	1120	230 / 460 / 796	256T	OWP101	29.0 / 14.5 / 8.4	86.6%	322 lbs
15	1120	230 / 460 / 796	284T	OWP151	41.4 / 20.7 / 12	87.7%	417 lbs
20	1120	230 / 460 / 796	286T	OWP201	54 / 27 / 15.6	87.7%	459 lbs
25	1125	230 / 460 / 796	324T	OWP251	65.2 / 32.6 / 18.8	88.4%	611 lbs
30	1120	230 / 460 / 796	326T	OWP301	78 / 39 / 22.5	88.7%	668 lbs
40	1120	230 / 460 / 796	365T	OWP401	100 / 50 / 28.9	88.9%	807 lbs
50	1120	230 / 460 / 796	404T	OWP501	123 / 61.5 / 35.5	89.9%	997 lbs
60	1120	230 / 460 / 796	405T	OWP601	145.2 / 72.6 / 42	89.9%	1087 lbs
75	1140	230 / 460 / 796	444T	OWP751	185.2 / 92.6 / 53.5	90.6%	1431 lbs
100	1140	230 / 460 / 796	445T	OWP1001	242 / 121 / 69.9	91%	1751 lbs



# Air Compressor Motors ODP

*Definite Purpose Motors*

## APPLICATIONS

- + Single-Phase Compressors

HP	RPM	VOLTS	FRAME	MODEL	SF	FL AMPS	OVERLOAD
1.5	3600	115 / 230	56	A843	1	22 / 11	Manual
2	3600	115 / 230	56	A874	1	24 / 12	Manual
3	3600	230	56	A867	1	15	Manual
5	3600	208-230	56HZ	A976	1.15	22	Manual
7.5	3600	208-230	184T	A1057	1.15	34.3 / 31.0	None

## FEATURES

- + Class B Insulation
- + 40°C Ambient Temperature
- + Manual Reset Thermal Overload Protector
- + Rigid Base
- + ODP Enclosure



CONTROLS

ENERGY STORAGE

MOTORS

PUMPS

VALVES

COMPRESSORS

PNEUMATICS

SAWMILLS

METAL RECYCLING

TRANSIT & RAILROAD

WATER & WASTEWATER

DIMENSIONS & MOUNTING





(888) 384-2111 840 Gessner Rd, Ste 950, Houston, TX 77024 [ISS-NA.com](http://ISS-NA.com)

© 2021 Industrial Service Solutions, LLC. All Rights Reserved. PUB2021-2